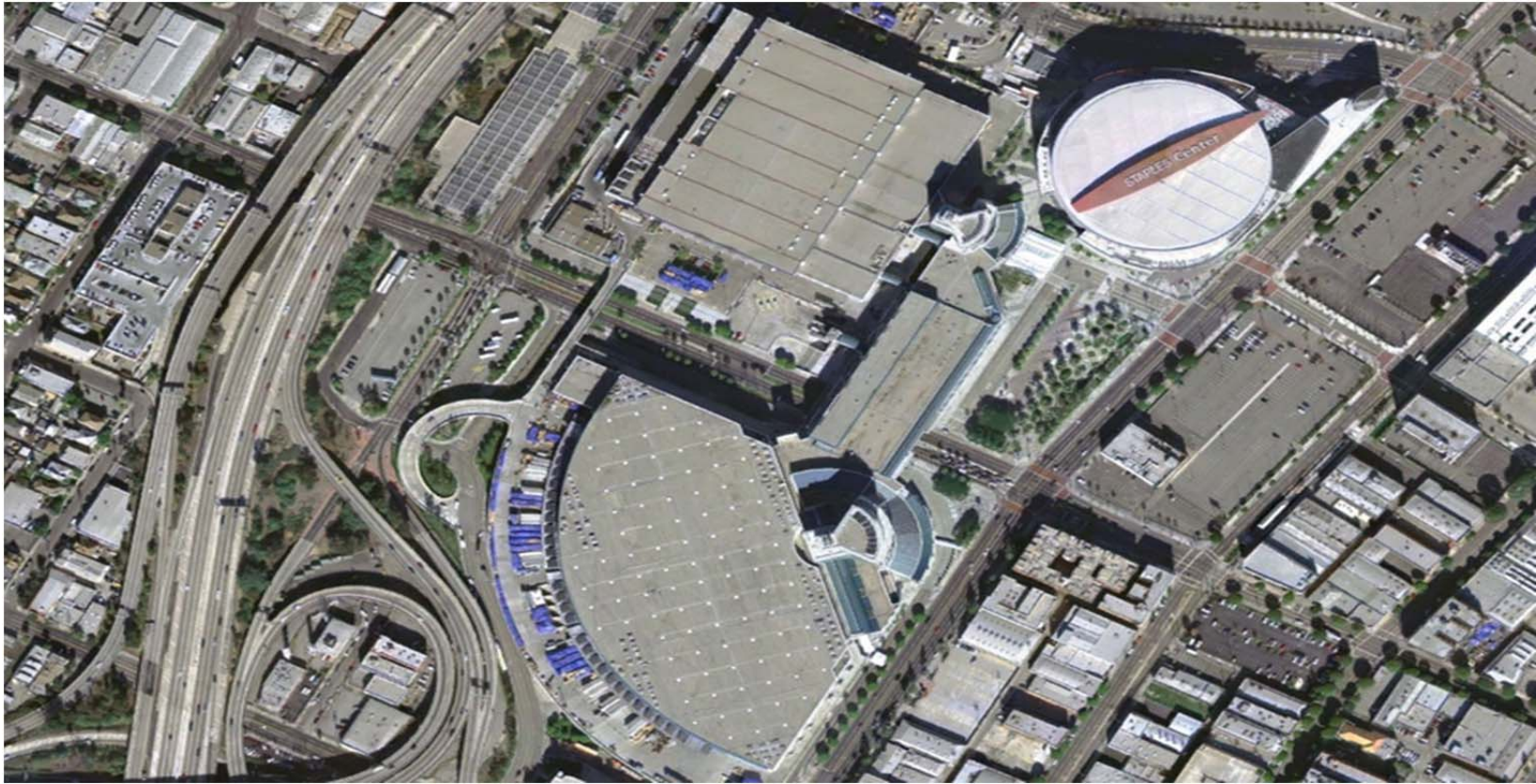




Convention Center Proposal Supplement

January 2015



CURRENT RELATED PLANS & PROJECTS

A. LOS ANGELES CONVENTION CENTER EXPANSION AND RENOVATION PROJECT

To view the City's design criteria and other informational project documents for the Convention Center Expansion and Renovation Project, please refer to the project website at: <http://eng.lacity.org/projects/laccexpansion/index.htm>.

B. CENTRAL CITY COMMUNITY PLAN

<http://planning.lacity.org/complan/pdf/CCYCPTXT.PDF>

The Central City Community Plan applies to much of the downtown area. The boundaries are Ceasar E. Chavez Avenue to the North, Alameda Street to the East, the Santa Monica Freeway (I-10) to the South, and the Pasadena Freeway (I-110) to the West.

Status: Last comprehensively updated January 2003, current update launched January 2014

C. CONVENTION AND EVENT CENTER SPECIFIC PLAN

http://www.planning.lacity.org/eir/ConventionCntr/Other/849%20Exhibits/CEC_SP.pdf

Figure A illustrates the parcels subject to the Convention and Event Center Specific Plan, including LASED Design Guidelines as Appendix A of the Specific Plan document.

Status: Adopted November 2012, only becomes applicable upon the effective date of the Event Center Ground Lease



Figure A.
Convention and Event Center Specific Plan Boundaries

D. LOS ANGELES SPORTS AND ENTERTAINMENT DISTRICT (LASED) SPECIFIC PLAN

<http://planning.lacity.org/> General Plan > Community Plans > Specific Plans > LASED Specific Plan

Figure B illustrates the parcels subject to the LASED Specific Plan, including LASED Design Guidelines as Appendix A of the Specific Plan document.

Status: Adopted October 2001, last amended November 2010

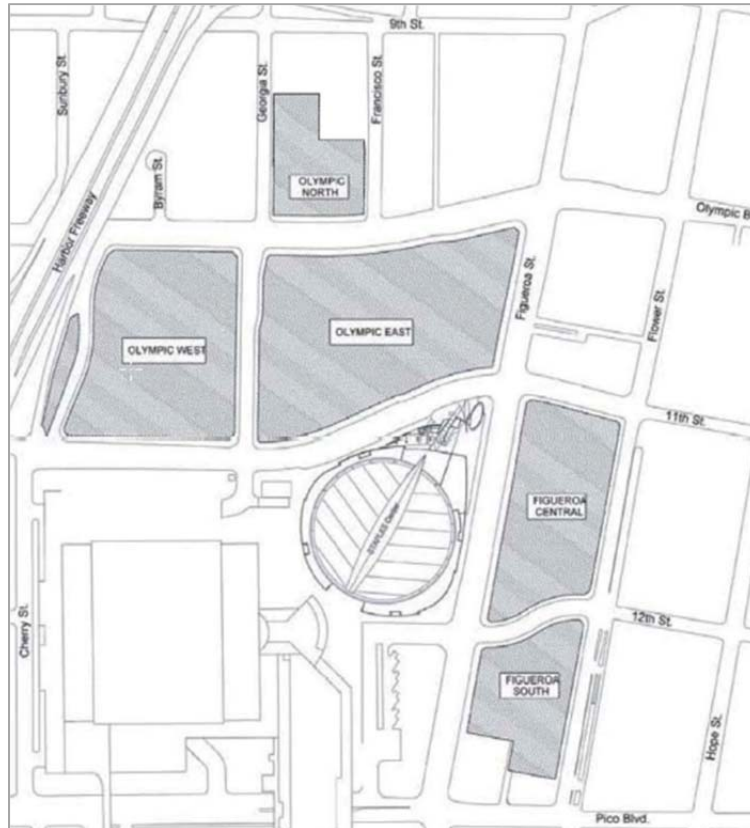


Figure B.
LASED Specific Plan Boundaries

E. LOS ANGELES SPORTS AND ENTERTAINMENT DISTRICT (LASED) STREETScape PLAN

Streetscape Plan: <http://planning.lacity.org/complan/othrplan/pdf/LASED%20Streetscape%20Plan%20text.pdf>

Streetscape Plan Exhibits: <http://planning.lacity.org/complan/othrplan/pdf/LASEDEXHIBITS.pdf>

The LASED Streetscape Plan is applicable to the street segments indicated in Figure C, and may be used as a guide for nearby streets.

Status: Adopted October 2001

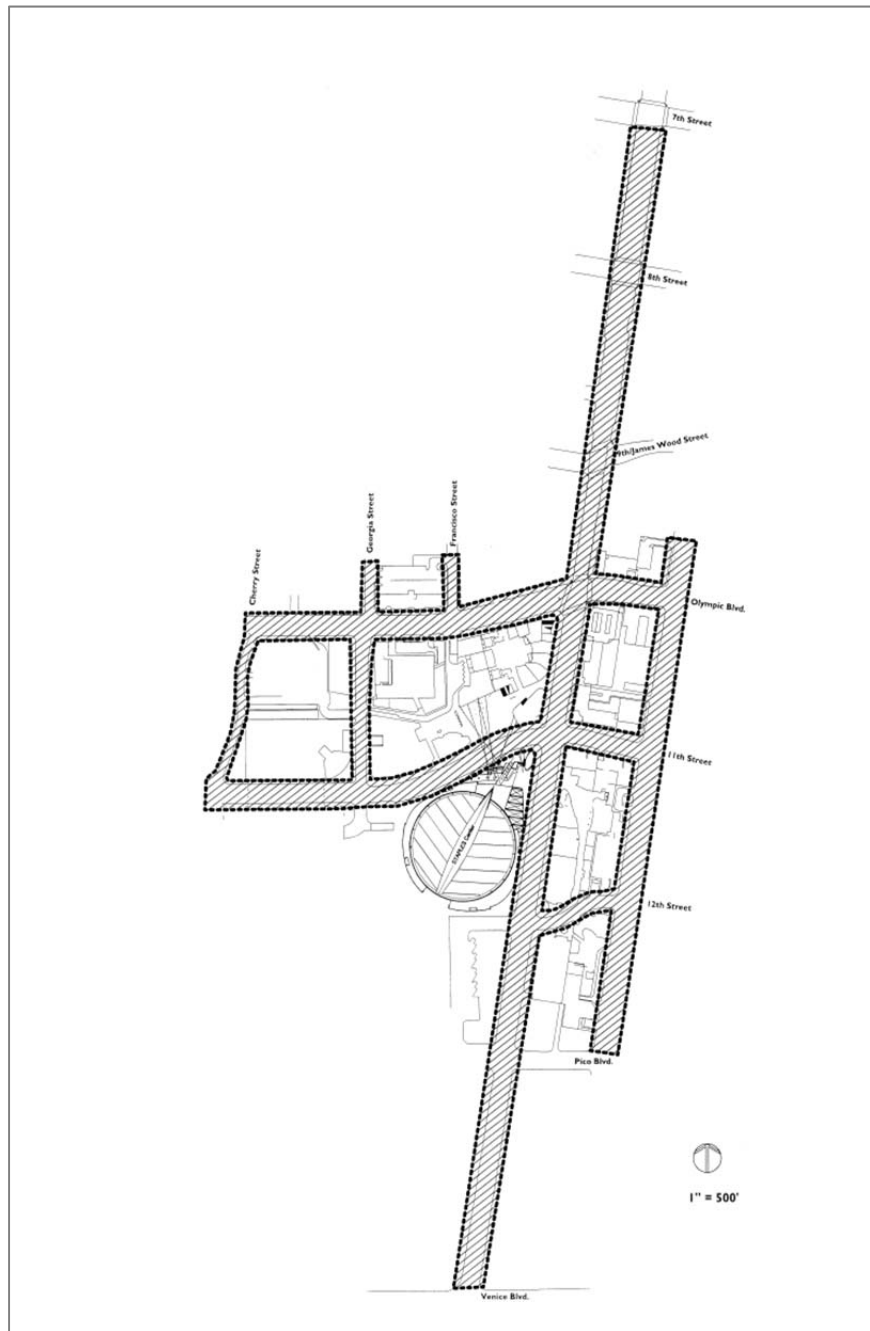


Figure C.
LASED Streetscape Plan Area

F. DOWNTOWN DESIGN GUIDE

<http://www.urbandesignla.com/resources/docs/DowntownDesignGuide/hi/DowntownDesignGuide.pdf>

The Downtown Design Guide applies to the highlighted areas of Figure D. The Convention Center project proposals should acknowledge the design standards for the “Convention Center” and “South Park” areas.

Status: Adopted April 2009

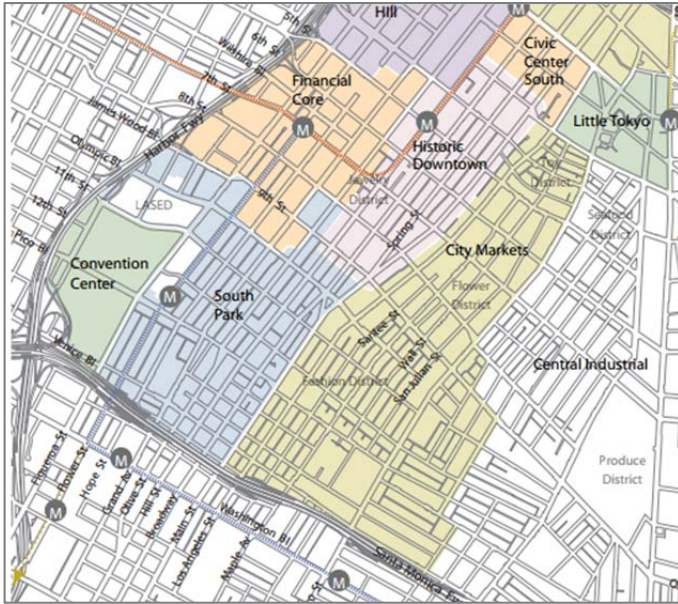


Figure D.
Downtown Design Guide Boundaries

G. Downtown Street Standards

<http://www.urbandesignla.com/resources/docs/DowntownStreetStandards/hi/DowntownStreetStandards.pdf>

“The new Downtown Street Standards establish definitive future curb lines and property lines for all Downtown streets, and, in some locations, additional required average sidewalk easements. In combination with the Downtown Design Guide, the Downtown Street Standards will provide certainty for developers and their architects as to the building street wall location and required roadway improvements. It will also provide certainty for building, business and homeowners that the character of their street on which their investments are located will not be diminished by unanticipated future sidewalk narrowing.”

Sidewalk improvements may include:

- Granite or brick edge band.
- Pedestrian-scale street lights.
- Continuous landscaped parkway.
- Large tree well (minimum 100 square feet).
- Small tree well (40 to 100 square feet) with structural soil under entire sidewalk.
- Tree planting in parkway or large tree well
- Tree planting in small tree well.
- Irrigation of parkways and tree wells.

Status: Adopted April 2009

H. My Figueroa

Project Website: <http://www.myfigueroa.com/>

Final EIR: <http://planning.lacity.org/eir/BicyclePlan/FEIR/assets/figueroa-streetscape-project-feir-minus-appendices.pdf>

Figure E illustrates the project boundaries for the My Figueroa (“MyFig”) Streetscape.

Status: Adopted by City Council May 16, 2014

I. Los Angeles Streetcar, Inc.

Project Website: <http://streetcar.la/>

Economic Impact Analysis (AECOM, 2014): http://streetcar.la/wp-content/uploads/2014/10/20140912_Streetcar_Technical-Appendix_Final_Logo.pdf

Figure F illustrates the proposed route for the Los Angeles Streetcar, a project headed by the office of Councilman Jose Huizar (CD14). The draft EIR is expected to be released in early 2015.

Status: Community Facilities District established May 2013, Operations Management Plan adopted September 2013



Figure E.
My Figueroa Streetscape Project Boundaries



Figure F.
Proposed Streetcar Route

J. PRIVATE PROJECTS

FIG SOUTH - 1200 SOUTH FIGUEROA STREET - DIR-2014-1795-SPP-SPPA

DCP Case information: <http://161.149.221.137/caseinfo/casesummary.aspx?case=DIR-2014-1795-SPPA-SPP>

Status: Revised project approved November 12, 2014

- Subject to LASED Specific Plan and Streetscape Plan
- Public Improvements
 - Construction of sewers and drainage facilities (BOE)
 - Installation of street lights (BSL), sidewalks, tree wells, and street trees (BSS)
 - Street improvements as required by Section 14 of the LASED Specific Plan (BOE)
- Transportation Demand Management
 - Transit and rideshare information
 - Conveniently located public transit stops
 - Designated Project Representative for area Transportation Management Organization (TMO) and South Park Event Coordination Committee

FIG CENTRAL - 1101 SOUTH FLOWER STREET - DIR-2014-3673-SPPA

DCP Case information: <http://161.149.221.137/caseinfo/casesummary.aspx?case=DIR-2014-3673-SPPA>

Status: Revised project approved January 16, 2015

METROPOLIS - 811-899 SOUTH FRANCISCO STREET - ZA-2014-2221-ZV-SPR

DCP Case information: <http://161.149.221.137/caseinfo/casesummary.aspx?case=ZA-2014-2221-ZV-SPR>

Status: Revised project approved September 15, 2014.

- Not subject to LASED Specific Plan or Streetscape Plan
- Sidewalks
 - Granite or brick edge adjacent to curb
 - Landscaped parkway on Francisco St, James M. Wood Blvd, and 8th St
- Streetscape Improvements
 - Maintenance agreement for provision and care of streetscape elements in the public right-of way
 - Ornamental street lighting as specified by Downtown Design Guide
 - Street trees as specified by BSS
- Proposal for Avenue of the Angels
 - <http://la.curbed.com/tags/avenue-of-angels>
 - https://www.cbremarketplace.com/listings/12526/Internal%20Documents/Metropolis_eBlast_4.8.13_V4.pdf



Figure G.
Fig South Project Site



Figure H.
Fig Central Project Site



Figure I.
Metropolis Project Site

**WILSHIRE GRAND - 930 WEST WILSHIRE BOULEVARD
CPC-2009-3416-TDR-CUB-CU-CUW-ZV-SN-DA-ZAD-SPR-GB**

DCP Case information:

<http://161.149.221.137/caseinfo/casesummary.aspx?case=CPC-2009-3416-TDR-CUB-CU-CUW-ZV-SN-DA-ZAD-SPR-GB&zimas=y&pin=&address=685%20S%20FIGUEROA%20ST>

Status: Project approved May 21, 2011

Project website: <http://www.wilshiregrandcenter.com/>

7th Street Improvement Project: As part of the Wilshire Grand Development Agreement, the City is coordinating a streetscape improvement along 7th Street between Figueroa Street and Olive Street, along with improvements to the 110 Freeway overpasses on 7th Street and Wilshire Boulevard. Potential improvements could include new lane configurations to accommodate alternative transportation modes, bus and streetcar platforms, improved pedestrian circulation, wayfinding and other identify signage. The project is scheduled for completion by late 2016.

Figueroa Corridor Sign District Study: As part of the Wilshire Grand Development Agreement, the City will also be undertaking a future study for a potential signage supplemental use district that would connect the existing sign districts in the vicinity, including the Wilshire Grand Sign District, Figueroa/Olympic Sign District, and LASED and Convention Center Sign Districts.

THE BLOC - 700 SOUTH FLOWER STREET

Status: Project under construction

Project website: <http://www.theblocdowntown.com/>

ONYX - 416-440 & 500-526 WEST PICO BOULEVARD - CPC-2012-1665-TDR-ZV-SPR

DCP Case information:

<http://161.149.221.137/caseinfo/casesummary.aspx?case=CPC-2012-1665-TDR-ZV-SPR&zimas=y&pin=&address=420%20W%20PICO%20BLVD>

Status: Project approved March 27, 2014

Project website: <http://www.simpsonpropertygroup.com/apartments/los-angeles-california/lofts-at-security-building-downtown-financial-district>

ONNI - 1212 SOUTH FLOWER STREET - CPC-2013-4125-TDR-MCUP-ZV-SPR

DCP Case information:

<http://161.149.221.137/caseinfo/casesummary.aspx?case=CPC-2013-4125-TDR-MCUP-ZV-SPR&zimas=y&pin=&address=1212%20S%20FLOWER%20ST>

Status: Project approved by City Planning Commission on October 9, 2014. Pending final review and approval by City Council.

Project website: <http://www.onni.com/commercial/office/international/los-angeles/1212-south-flower/>

AMACON - 1133 SOUTH HOPE STREET - ZA-2013-4157-ZV-TDR-SPR

DCP Case information:

<http://161.149.221.137/caseinfo/casesummary.aspx?case=ZA-2013-4157-ZV-TDR-SPR&zimas=y&pin=&address=1133%20S%20HOPE%20ST>

Status: Project approved July 11, 2014