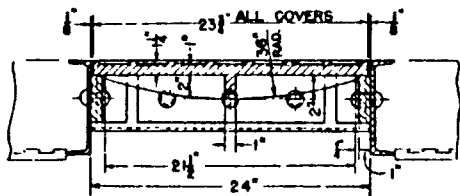
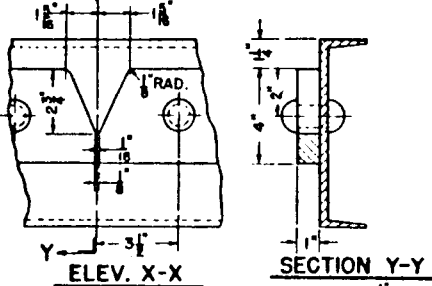


SECTION A-A

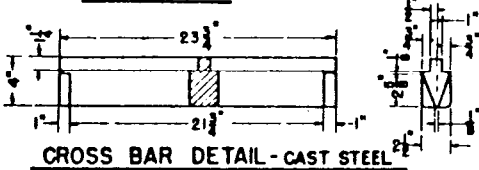


SECTION B-B
ALL COVERS CAST STEEL



ELEV. X-X

SECTION Y-Y



CROSS BAR DETAIL - CAST STEEL

TABLE OF DIMENSIONS

DIM.	NUMBER OF COVERS							
	1	2	3	4	5	6	7	8
A	1'-6"	2'-9"	4'-2"	5'-7"	7'-0"	8'-5"	9'-10"	11'-3"
B	-	-	1	2	3	4	5	6
C	0'-9"	2'-0"	3'-5"	4'-10"	6'-5"	7'-8"	9'-1"	10'-6"

ALL COVERS 8 1/2 x 23 1/2

STRUCTURAL STEEL FRAME TO BE GALVANIZED AFTER ASSEMBLY.

H 20 LOADING

SPAN L IN FEET NOT TO EXCEED	SIZE CHANNEL REQUIRED		ALTERNATE	
	M-in	WT-Lb/L	M-in	WT-Lb/L
2.00	6	10.5		
3.00	7	12.25	6	13.00
3.25	7	12.25		
3.50	7	12.25	8	13.75
3.87	8	13.75	7	14.75
4.00	8	13.75		
4.33	8	13.75		
4.50	8	13.75		
4.67	9	15.00	8	15.75
4.85	9	15.00	8	16.75
5.20	9	15.00	8	16.75
5.60	9	15.00	8	16.75
5.83	9	20.00	10	20.00
6.75	9	20.00	10	20.00
7.75	10	20.00		
9.00	12	20.70	10	25.00
10.33	12	20.70	10	30.00
11.50	12	25.00		
12.00	12	25.00		
13.50	12	30.00		
15.00	15	33.90		
16.00	15	33.90		

DEPARTMENT OF PUBLIC WORKS

BUREAU OF ENGINEERING

CITY OF LOS ANGELES

MULTIPLE COVER DETAILS
FOR SANITARY SEWER MANHOLES

STANDARD PLAN

B-3019

DESIGNED BY
C. Morrison

SUBMITTED Dec 9th 1947

APPROVED *Shell*
DEPUTY ENGINEER - DESIGN

DRAWN BY
H. J. McMALE

BY *H. J. McMale*
ENGINEER OF SEWER DESIGN

APPROVED Dec 10, 1947

CHECKED BY
J. R. Allen

PREPARED BY *J. R. Allen*
ENGINEER - MAPS AND RESEARCH

J. R. Allen
CITY ENGINEER

SUPERSEDES 29794