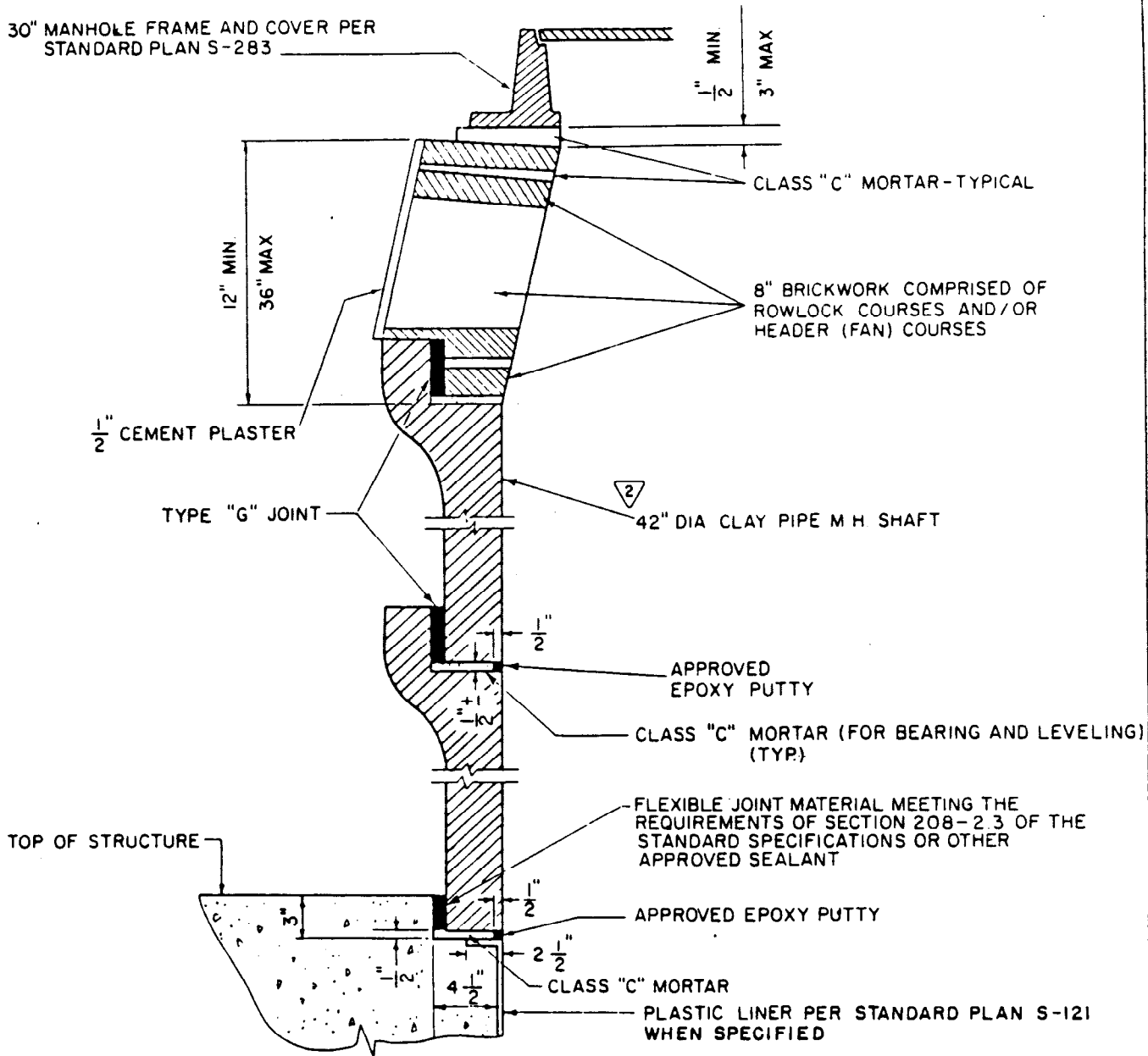


30" MANHOLE FRAME AND COVER PER STANDARD PLAN S-283



NOT TO SCALE

NOTES:

1. ALL COMPOUNDS AND MATERIALS SHALL BE APPLIED IN ACCORDANCE WITH THE MANUFACTURER'S RECOMMENDATIONS.

BUREAU OF ENGINEERING		DEPARTMENT OF PUBLIC WORKS				CITY OF LOS ANGELES	
CLAY PIPE MANHOLE SHAFT					STANDARD PLAN S-128-2		
SUBMITTED <i>Aug 16</i> 1971 <i>Robert A. Wilson</i> ENGINEER - SEWER DESIGN DEPUTY ENGINEER		REVISIONS				SUPERSEDES	REFERENCES
NO	DATE	DESCRIPTION	ENGR OF DESIGN	CITY ENGR	B-3793 B-3961	S-283 S-121	
1	12-17-79	MODIFIED CLASS C MORTAR AND TYPE B JOINT REQUIREMENTS UPDATED PLAN FORMAT, CHANGED NOTES, M H F & C SPECS	<i>[Signature]</i>	<i>[Signature]</i>			
2	10-7-81	CHANGED 36" DIAMETER CLAY PIPE TO 42"	<i>[Signature]</i>	<i>[Signature]</i>			
APPROVED <i>[Signature]</i> 1971 CITY ENGINEER						VAULT INDEX NUMBER B-4025	
DESIGNED BY	DRAWN BY	CHECKED BY					SHEET 1 OF 1 SHEETS
ALLISON	O B W T M	G M					