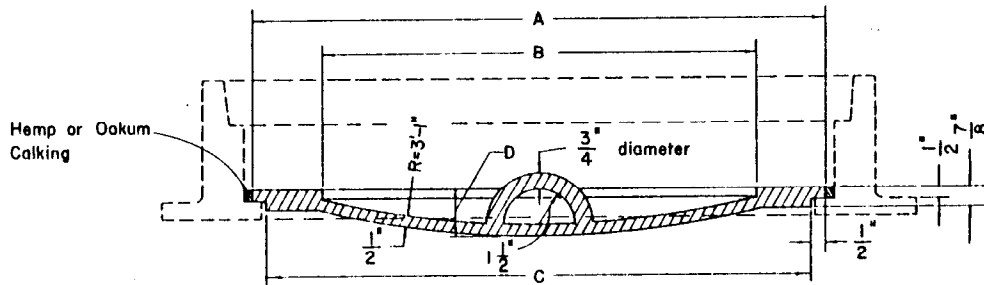


PLAN



SECTION A-A

NOTES

1. These inner covers to be used with standard manhole frames per Standard Plans S-281, S-282 & S-283.
2. The inner cover shall be of gray cast iron, not machined, but shall seat evenly without rocking.
3. Weight as given not to vary over 5 per cent.

DIMENSIONS FOR INNER COVER

Manhole Frame (See Note 1)	A	B	C	D	Wt.
S-281	2'-0 3/4"	1'-7"	1'-11 3/4"	0'-2 1/8"	78 lb.
S-282	2'-3 3/4"	1'-10"	2'-2 3/4"	0'-2 1/2"	97 lb.
S-283	2'-6 3/4"	2'-1"	2'-5 3/4"	0'-3"	117 lb.

BUREAU OF ENGINEERING

DEPARTMENT OF PUBLIC WORKS

CITY OF LOS ANGELES

MANHOLE INNER COVER "C"

STANDARD PLAN
S-156-0

SUBMITTED 10-2-1975

REVISIONS

SUPERSEDES

REFERENCES

APPROVED 10-2-1975
CITY ENGINEER

NO.	DATE	DESCRIPTION	DIVISION ENGINEER	CITY ENGINEER

S-281
S-282
S-283

Vault Index Number B-3863

SHEET 1 OF 1 SHEET