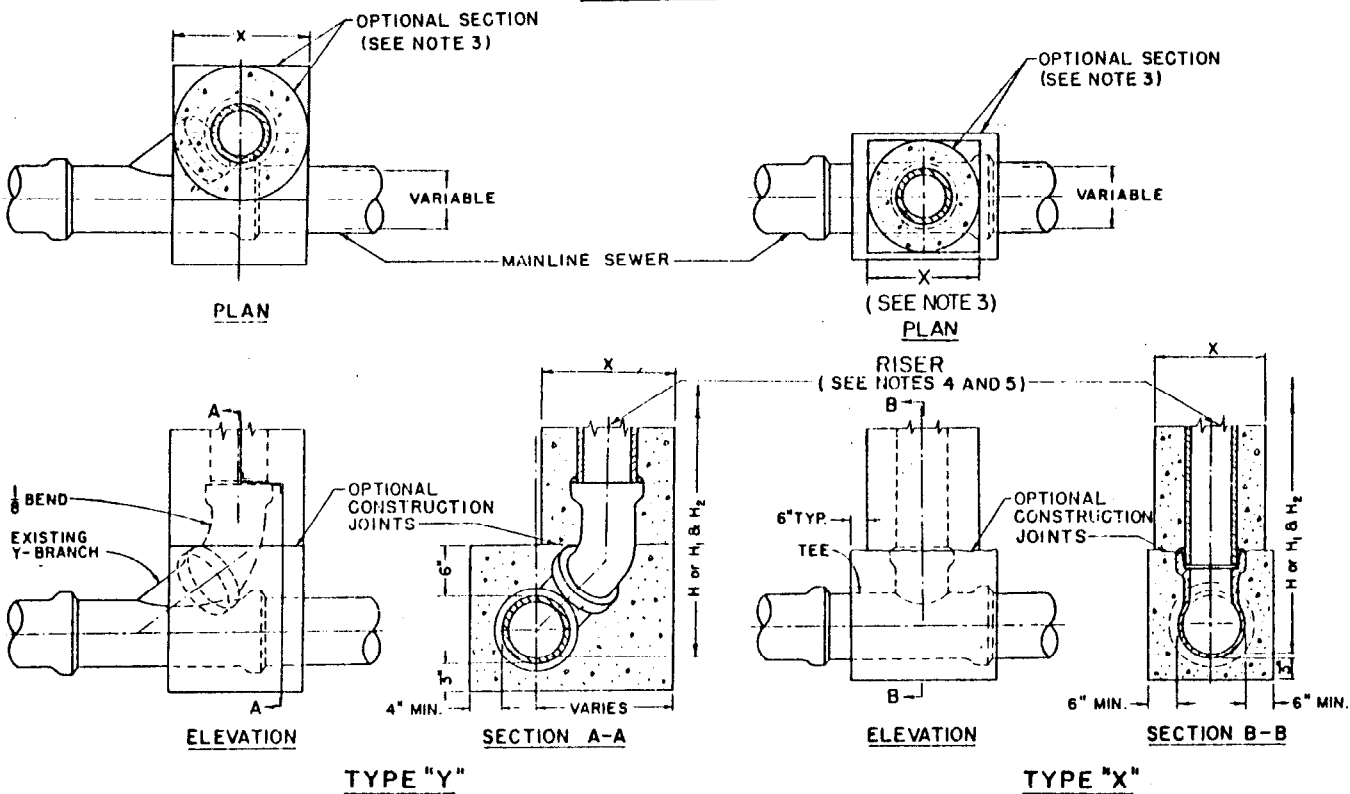


CHIMNEYS



BASES

DEPARTMENT OF PUBLIC WORKS

BUREAU OF ENGINEERING

CITY OF LOS ANGELES

CHIMNEYS

STANDARD PLAN S-160-0

SUBMITTED *December 3, 1979*

REVISIONS

SUPERSEDES

REFERENCES

Robert M. Brown
ENGINEER OF DESIGN
Robert E. Brown
DEPUTY ENGINEER

NO.	DATE	DESCRIPTION	CITY ENGR

D-19205

APPROVED *DEC 10 1979*
Arnold C. Williams
CITY ENGINEER

VAULT INDEX NUMBER B-3991

DESIGNED BY *LIE* DRAWN BY *RAW* CHECKED BY *LJM*

SHEET 1 OF 2 SHEETS

NOTES FOR CHIMNEYS

1. RISER PIPE AND FITTINGS SHOWN HEREON, SHALL, UNLESS OTHERWISE INDICATED, BE OF THE SAME MATERIAL AS THE MAIN LINE SEWER, AND MAY BE ANY OF THE FOLLOWING:
 - A. VCP CONFORMING TO SECTION 207-8 OF THE STANDARD SPECIFICATIONS;
 - B. ABS SOLID WALL PIPE CONFORMING TO SECTION 207-14 OF THE STANDARD SPECIFICATIONS;
 - C. ABS COMPOSITE PIPE CONFORMING TO SECTION 207-15 OF THE STANDARD SPECIFICATIONS;
 - D. PVC PIPE CONFORMING TO SECTION 207-16 OF THE STANDARD SPECIFICATIONS.
2. THE CONTRACTOR MAY USE A TYPE OF MATERIAL DIFFERENT FROM THE MAIN LINE PROVIDED HE UTILIZES SUITABLE ADAPTERS APPROVED BY THE ENGINEER.
3. CONCRETE FOR BEDDING AND ENCASEMENT FOR PIPE AND FITTINGS SHALL BE CLASS 420-C-2000. THE VERTICAL CONCRETE ENCASEMENT SHALL BE PLACED UNIFORMLY AROUND THE RISERS IN ORDER TO MAINTAIN PROPER ALIGNMENT AND MAY BE EITHER CIRCULAR OR SQUARE IN CROSS SECTION AS SHOWN HEREON. X=16" FOR 6" CHIMNEYS. X=18" FOR 8" CHIMNEYS.
4. UNLESS OTHERWISE INDICATED ON THE PROJECT PLANS, CHIMNEY RISERS AND WYE BRANCHES SHALL BE 6" DIAMETER.
5. CHIMNEYS ARE SHOWN ON THE PROJECT PLANS BY THE ABBREVIATION "CH", FOLLOWED BY A LETTER DESIGNATING THE TYPE OF CHIMNEY, A HYPHEN, AND THEN ANOTHER LETTER DESIGNATING THE TYPE OF BASE (E.G., CH A-Y). FOR CHIMNEY RISERS OTHER THAN 6", THE RISER SIZE IS INDICATED ON THE PROJECT PLANS PRECEDING THE CHIMNEY TYPE DESIGNATION (E.G., 8" CH A-X).
6. DIMENSIONS H , H_1 , AND H_2 (THE MAXIMUM VERTICAL DISTANCE FROM THE INVERT OF THE MAIN LINE SEWER TO THE TOP OF EACH WYE) ARE INDICATED ON THE PROJECT PLANS (E.G., $H_1=7.8'$, $H_2=9.8'$). THESE DIMENSIONS MAY BE SHORTENED WITHIN THE LIMITS OF THE LENGTH OF THE WYE FITTING.
7. UNLESS OTHERWISE INDICATED ON THE PROJECT PLANS, WYE BRANCHES SHALL FACE PERPENDICULAR TO THE CENTER LINE OF THE MAIN LINE SEWER.
8. WYE BRANCHES ON TYPE "A" CHIMNEYS NOT JOINED TO HOUSE CONNECTION SEWERS SHALL BE INSTALLED AS INDICATED ON THE PROJECT PLANS.
9. ALL RISERS, CHIMNEY BASES WITHOUT RISERS, AND UNCONNECTED BRANCHES SHALL BE SEALED WITH A CAP AND 1" THICK TYPE "F" MORTAR AROUND THE CIRCUMFERENCE OF THE CAP.