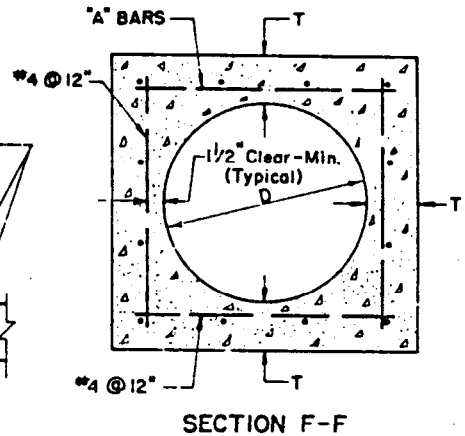
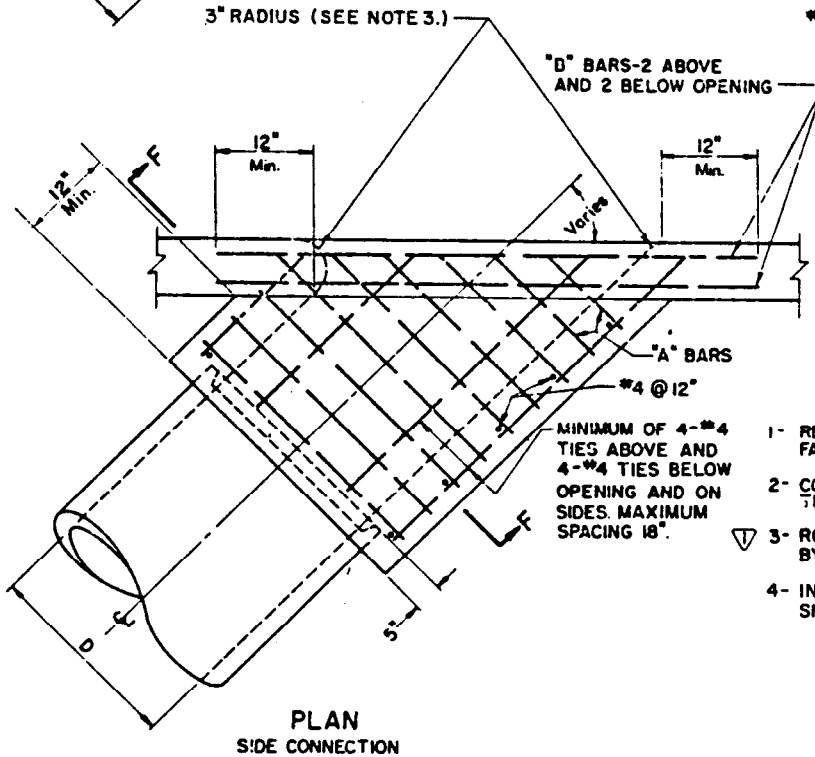
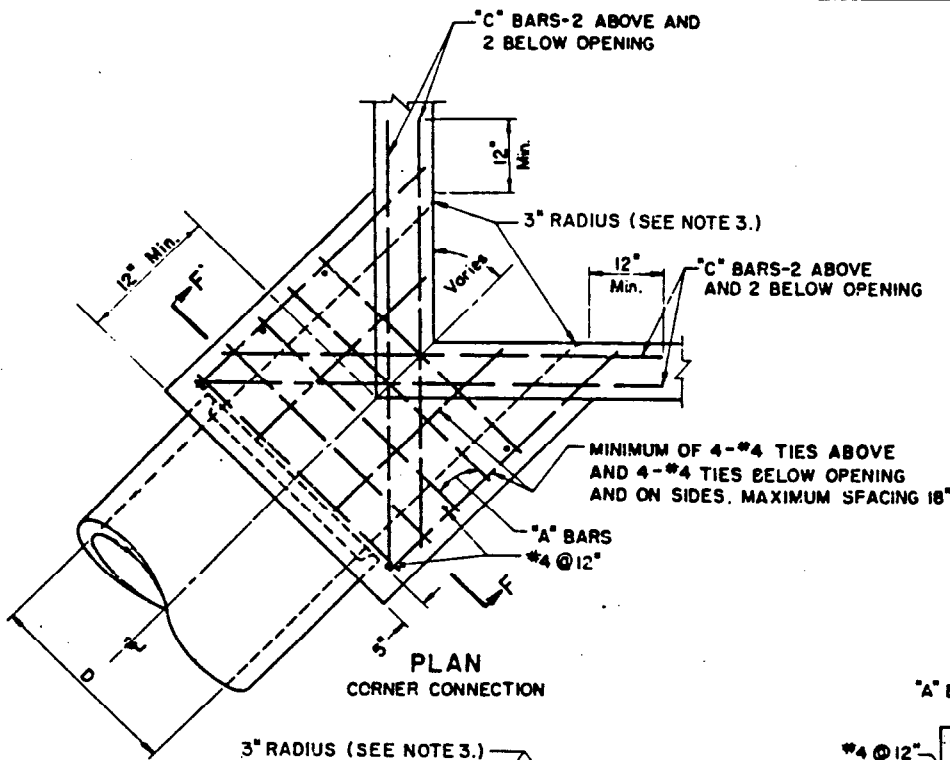


D	T	A' bars	B' & C' bars
12"	4 1/2"	#4 @ 6"	#5
15"	4 1/2"		
18"	5"		
21"	5 1/2"		
24"	6"		
27"	6 1/2"		
30"	7"		
33"	7"		
36"	7 1/2"		
39"	8"		
42"	8"	#5 @ 6"	#6
45"	8"		
48"	8"		
51"	8"		
54"	8"		
57"	10"		
60"	10"		
63"	10"		
66"	11"		
69"	11"		
72"	11"		



- NOTES**
- 1- REINFORCING STEEL SHALL BE 1/2" CLEAR FROM FACE OF CONCRETE UNLESS OTHERWISE SHOWN.
 - 2- CONCRETE SHALL BE OF THE SAME CLASS AS THE STRUCTURE WITH WHICH IT IS POURED.
 - 3- ROUNDED EDGE OF OUTLET SHALL BE CONSTRUCTED BY POURING CONCRETE AGAINST A CURVED FORM.
 - 4- INTERIOR SURFACE OF CONNECTION SHALL BE SMOOTH AND CLEAN.

BUREAU OF ENGINEERING		DEPARTMENT OF PUBLIC WORKS				CITY OF LOS ANGELES	
MONOLITHIC CONNECTION					STANDARD PLAN S-331-1		
SUBMITTED <u>June 23, 1972</u> <i>Clifford M. Kilgus</i> MEMBER BY REGION <i>Ronald K. Lawrence</i> DEPUTY ENGINEER		REVISIONS				SUPERSEDES	REFERENCES
NO	DATE	DESCRIPTION	ENGR OF DESIGN	CITY ENGR	B-3644 B-3905	▽	
▽	12-29-78	REVISED NOTE 3 DELETED B-3648 FROM "REFERENCE" BLOCK.	<i>Clifford M. Kilgus</i>	<i>Ronald K. Lawrence</i>			
APPROVED <u>12-29-78</u> <i>Ronald K. Lawrence</i> CITY ENGINEER						VAULT INDEX NUMBER B-3960	
DESIGNED BY	DRAWN BY	CHECKED BY					SHEET 1 OF 1 SHEETS
AEF	JRP	WRN					