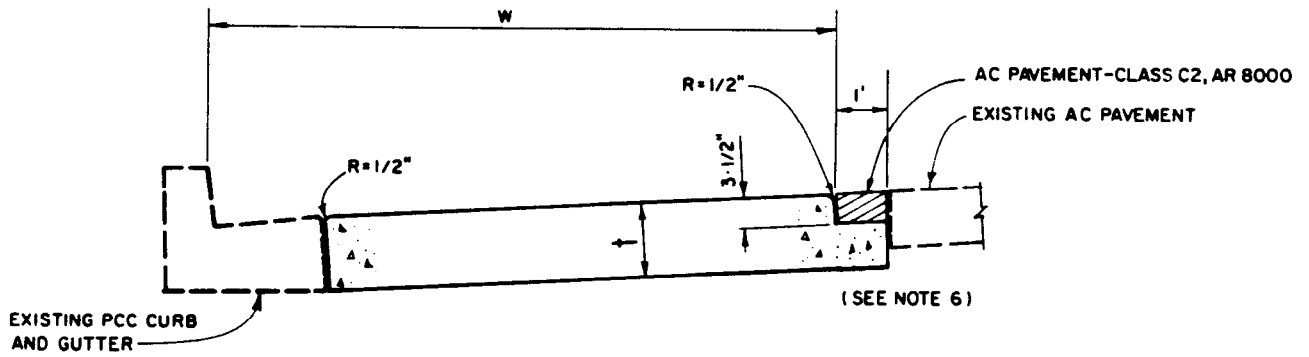


CASE I
(EXISTING CURB, GUTTER AND AC PAVEMENT)
PLAN



SECTION A-A

BUREAU OF ENGINEERING

DEPARTMENT OF PUBLIC WORKS

CITY OF LOS ANGELES

BUS PAD

STANDARD PLAN
S-433-0

SUBMITTED *June 24, 1989*

[Signature]
 ENGINEER OF DESIGN
 DEPUTY ENGINEER

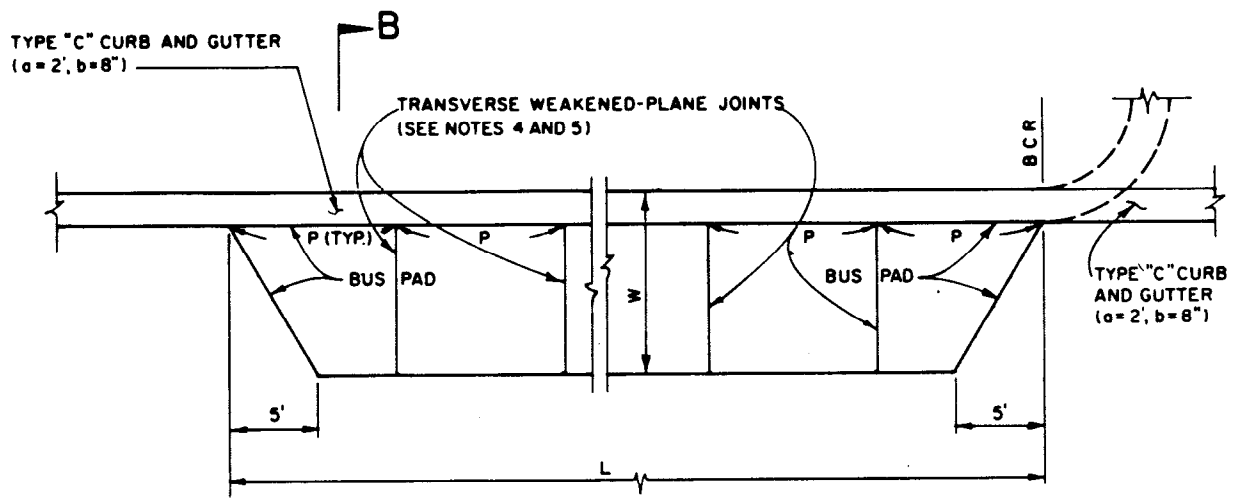
APPROVED *July 21, 1989*
[Signature]
 CITY ENGINEER

DESIGNED BY: RAB DRAWN BY: RGM CHECKED BY: RGS

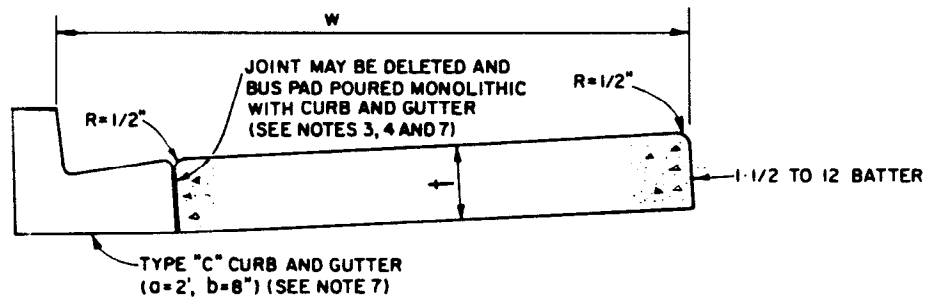


REVISIONS	
NO.	DESCRIPTION

SUPERSEDES	REFERENCES
	S-410
VAULT INDEX NUMBER B-4101	
SHEET 1 OF 2 SHEETS	



CASE II
(NEW CURB, GUTTER AND PAVEMENT)
PLAN



SECTION B-B

NOTES

1. WHERE CURB ONLY EXISTS, REMOVE CURB AND USE SECTION B-B FOR CURB AND PAVEMENT AND SECTION A-A FOR JOINING EXISTING ASPHALT CONCRETE PAVEMENT.
2. DIMENSIONS:

L = 90'	
(UNLESS	↑ = 8"
OTHERWISE	W = 12'
SPECIFIED)	P = 12' MINIMUM TO 15' MAXIMUM, EQUALLY SPACED.
3. CONCRETE FOR BUS PADS SHALL BE CLASS 660-A-3750. EXCEPT, WHEN BUS PAD IS POURED MONOLITHIC WITH CURB AND GUTTER, CONCRETE SHALL BE CLASS 660-C-3750.
4. WHEN POUR IS MONOLITHIC, EXTEND SAWCUT INTO CURB.
5. TRANSVERSE WEAKENED-PLANE JOINTS SHALL BE SAWCUT TO A DEPTH OF 1-1/2 INCHES. SEALANT AND DOWELS ARE NOT REQUIRED. SEE SUBSECTION 302-6.5.4 .
6. USE 2"x4" HEADER TO FORM 3-1/2 INCH STEP SHOWN IN SECTION A-A. TOP OF HEADER SHALL BE SET TO LINE AND GRADE.
7. TYPE "C" INTEGRAL CURB AND CONCRETE PAVEMENT PER STANDARD PLAN S-410 MAY BE SUBSTITUTED FOR TYPE "C" CURB AND GUTTER AND BUS PAD WHEN POUR IS MONOLITHIC, IF APPROVED BY THE ENGINEER.