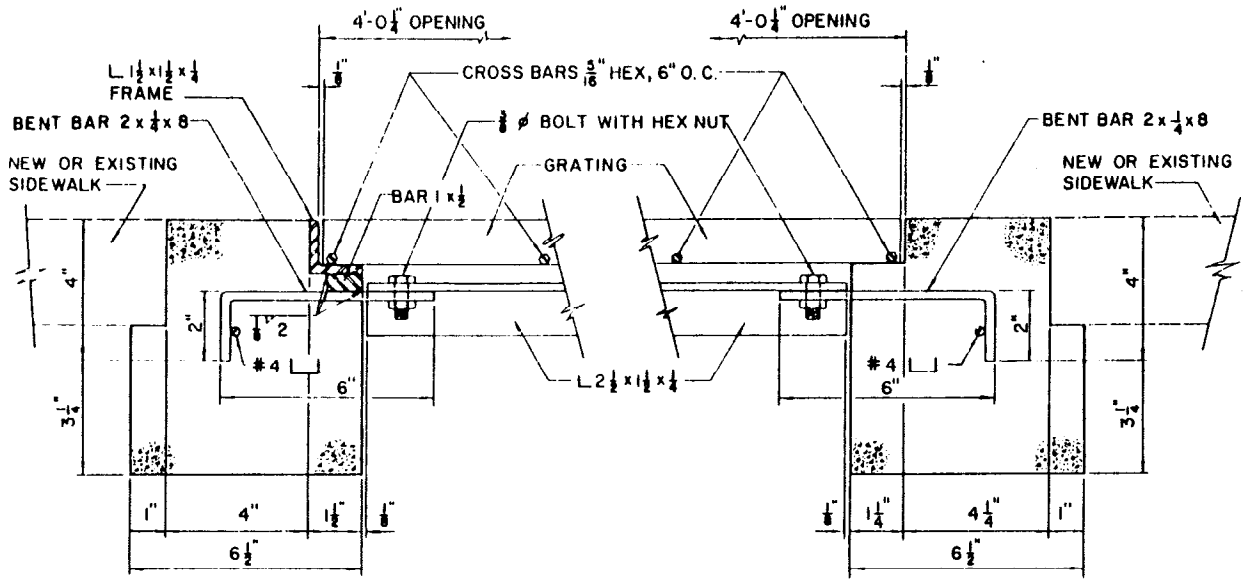
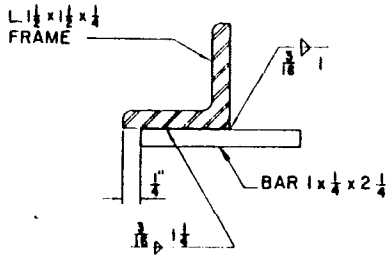


BUREAU OF ENGINEERING		DEPARTMENT OF PUBLIC WORKS			CITY OF LOS ANGELES	
ORNAMENTAL TREE GUARD AND GRATING				STANDARD PLAN S-455-2		
SUBMITTED: <i>March 12 1972</i>		REVISIONS			SUPERSEDES	REFERENCES
DIVISION ENGINEER <i>Charles R. Jones</i> CITY ENGINEER		NO	DATE	DESCRIPTION	ENGR OF DESIGN	ACTING CITY ENGR
APPROVED: <i>Dec 1 1972</i>		2	6-17-82	REV TITLE; REV. NOTES 3A, 3B, 3C, AND 5, DELETED 4" PIPES AND NOTE 6; ADDED REF. STD. PLAN S-456 AND NEW NOTE 6; NO. 3 WAS NO. 4 CONC. AGGREG. DELETED BENT BARS AT GUARD TOP.	<i>Raymond E. Jones</i>	<i>Phil King</i>
DESIGNED BY	DRAWN BY	CHECKED BY	VAULT INDEX NUMBER B-4038			
B.T.S.	B.T.S.	S.S.	SHEET 1 OF 3 SHEETS			

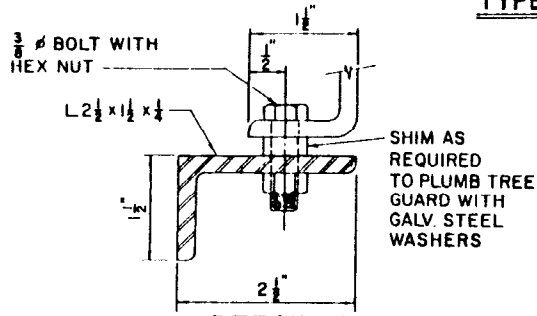


SECTION C-C
TYPE 1

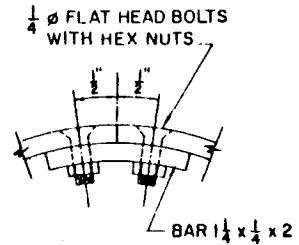
SECTION D-D
TYPE 2



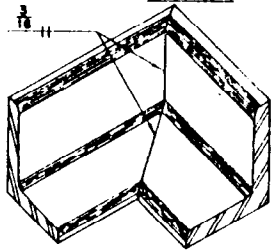
SECTION E-E
TYPE 1



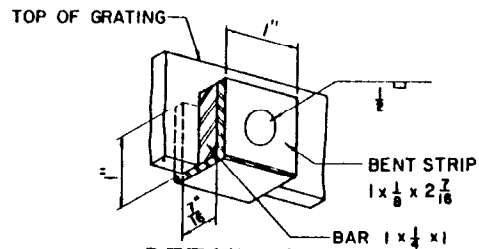
DETAIL-1
TYPES 1 AND 2



DETAIL-2
TYPES 1 AND 2



DETAIL-3
TYPE 1



DETAIL-4
TYPES 1 AND 2

NOTES

1. ALL STRIPS, BARS, PLATES AND STRUCTURAL SHAPES SHALL BE STEEL CONFORMING TO ASTM DESIGNATION A36.
2. BOLTS AND NUTS SHALL BE STEEL CONFORMING TO ASTM DESIGNATION A307 AND GALVANIZED (SEE NOTE 4).
- ② 3. ALL METAL PARTS OF THE GUARD, GRATING, AND ASSEMBLY HARDWARE SHALL BE FINISHED BY THOROUGHLY CLEANING THEM AFTER FABRICATION TO REMOVE ALL LOOSE MATERIAL, RUST, AND OIL AND THEN BY PAINTING AS FOLLOWS:
 - A. APPLY A COAT OF ZINC RICH PRIMER CONFORMING TO CALTRANS STANDARD SPECIFICATION SUBSECTION 91-2.01.
 - B. PRETREAT WITH VINYL WASH PRIMER PER CALTRANS STANDARD SPECIFICATION SUBSECTION 91-2.07.
 - C. TWO FINISH COATS OF ENAMEL, LUSTERLESS BLACK PER CALTRANS STANDARD SPECIFICATION SUBSECTION 91-4.01.
 - D. PAINTING METHODS SHALL BE AS REQUIRED FOR STRUCTURAL STEEL BY THE STANDARD SPECIFICATIONS.
- ② 4. ALL METAL PARTS OF THE FRAME SHALL BE GALVANIZED AFTER FABRICATION PER SECTION 210-3, STANDARD SPECIFICATIONS.
- ② 5. THE SPACER ASSEMBLY SHALL BE BONDED TO THE GRATING WITH RAPID SET EPOXY ADHESIVE CONFORMING TO CALTRANS STANDARD SPECIFICATION SUBSECTION 95-2.04.
- ② 6. AFTER ALL OTHER WORK PERTINENT TO PLANTING HAS BEEN COMPLETED, INSTALL TREE GUARD AND GRATING.