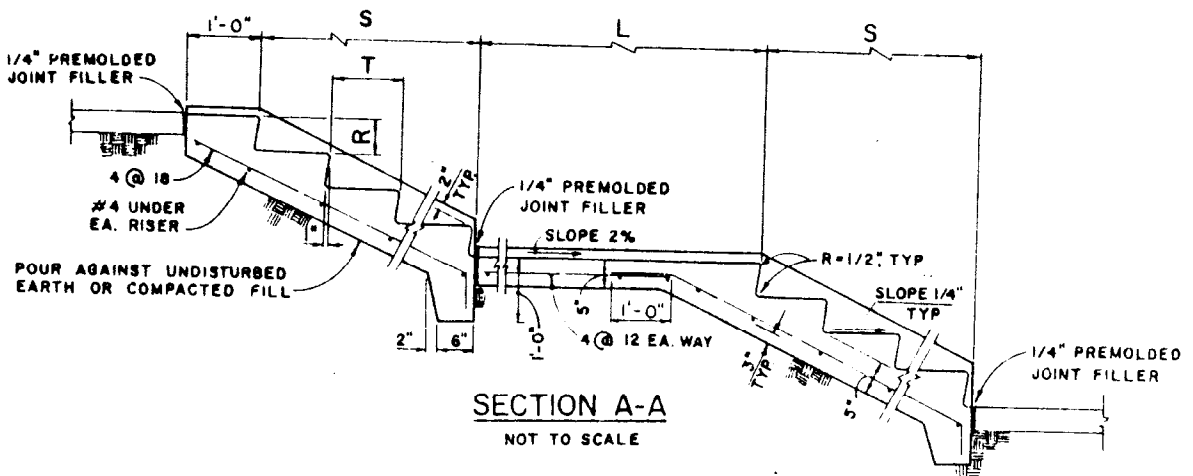
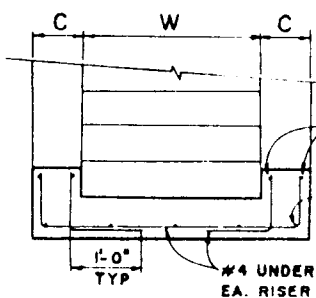


PLAN
NOT TO SCALE

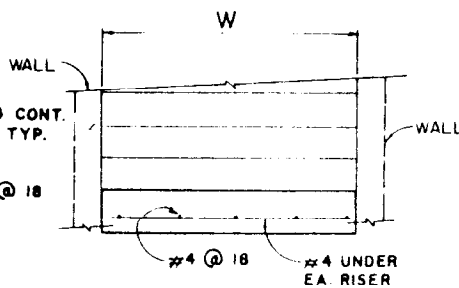
NOTE: SEE PROJECT PLAN FOR HANDRAIL DETAILS OR HANDRAIL STANDARD PLAN



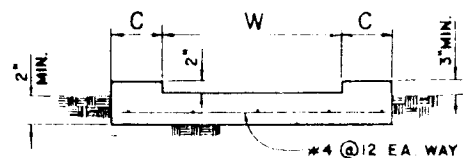
SECTION A-A
NOT TO SCALE



TYPE A



TYPE B



SECTION C-C

SECTION B-B
NOT TO SCALE

BUREAU OF ENGINEERING

DEPARTMENT OF PUBLIC WORKS

CITY OF LOS ANGELES

CONCRETE STAIRWAY

STANDARD PLAN
S-525-0

SUBMITTED April 6, 1977

REVISIONS

SUPERSEDES REFERENCES

DESIGNED BY *[Signature]*
DRAWN BY *[Signature]*
CHECKED BY *[Signature]*

NO	DATE	DESCRIPTION	DIV ENGR	CITY ENGR

B-3497

APPROVED April 12, 1977
[Signature]
CITY ENGINEER

VAULT INDEX NUMBER B 3804

DESIGNED BY J. HAMM
DRAWN BY W. LUD
CHECKED BY

SHEET 1 OF 2 SHEETS

NOTES

1. SEE THE PROJECT PLANS FOR THE FOLLOWING INFORMATION:
 - a. TYPE OF STAIRWAY AND LOCATION
 - b. W=WIDTH OF STAIRWAY
 - c. L=LENGTH OF LANDINGS
 - d. T=TREAD LENGTH
 - e. R=RISER HEIGHT
 - f. C=WIDTH OF CURB
 - g. S=LENGTH OF STAIRWAY FLIGHT
2. CONCRETE FINISH FOR EXPOSED SURFACES SHALL BE CLASS I AS SPECIFIED IN THE STANDARD SPECIFICATIONS EXCEPT THAT TREADS OF THE STEPS AND SURFACES OF LANDINGS SHALL BE TROWELED SMOOTH AND GIVEN A FINE BROOM FINISH IN A DIRECTION PERPENDICULAR TO THE CENTERLINE OF THE STAIRWAY. THE BROOM FINISH SHALL BE BROUGHT TO THE NOSE OF THE TREADS AND LANDINGS.
3. TWO HANDRAILS ARE REQUIRED UNLESS OTHERWISE NOTED ON THE PROJECT PLANS, OR UNLESS THE STAIRWAY IS NOT OVER 4 FEET WIDE IN WHICH CASE ONE HANDRAIL IS REQUIRED.