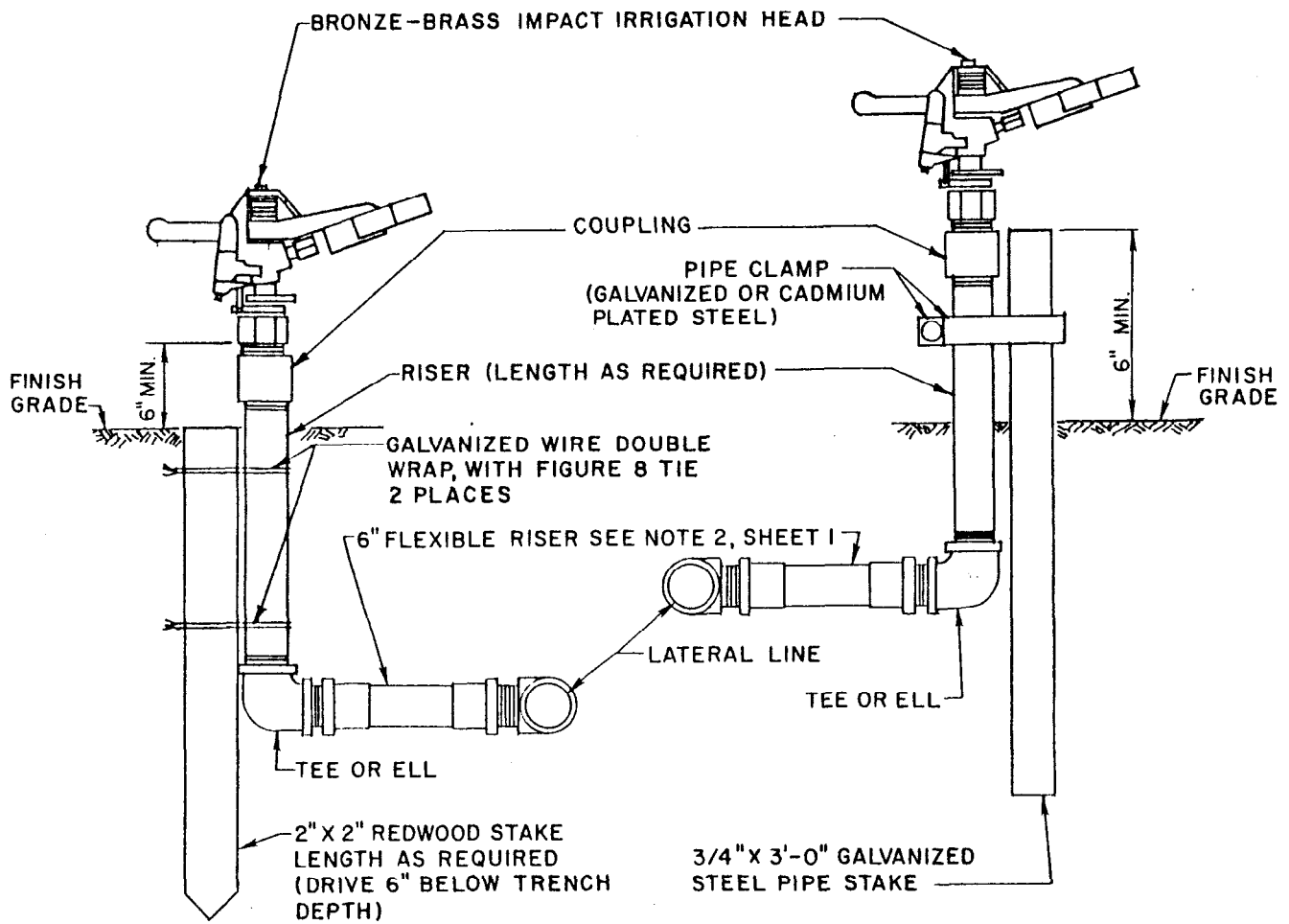


**NOTES:**

1. INSTALL LAWN SPRINKLER HEADS 3" ABOVE FINISH GRADE. BEFORE THE FIRST MOWING ADJUST ALL LAWN HEADS TO FINISH GRADE.
2. THE MAKE AND MANUFACTURER OF FLEXIBLE RISERS SHALL BE APPROVED BY THE ENGINEER PRIOR TO PURCHASE. UNLESS OTHERWISE SPECIFIED ON THE PLANS, USE OF THE FLEXIBLE RISER OR THE DOUBLE SWING JOINT IS OPTIONAL.

BUREAU OF ENGINEERING		DEPARTMENT OF PUBLIC WORKS				CITY OF LOS ANGELES	
<b>SHRUB, LAWN AND OSCILLATING SPRINKLER HEADS</b>					<b>STANDARD PLAN S-654-0</b>		
SUBMITTED <i>January 1978</i>	REVISIONS					SUPERSEDES	REFERENCES
ENGINEER OF DESIGN <i>Robert S. Lewis</i> DEPUTY ENGINEER	NO.	DATE	DESCRIPTION	ENGR. OF DESIGN	CITY ENGR.		
APPROVED <i>January 19 1978</i> <i>Donald C. Williams</i> CITY ENGINEER							
DESIGNED BY LANDSCAPE STDS. COM.	DRAWN BY R. G. M.	CHECKED BY A. G.				VAULT INDEX NUMBER B-3917	
						SHEET 1 OF 3 SHEETS	



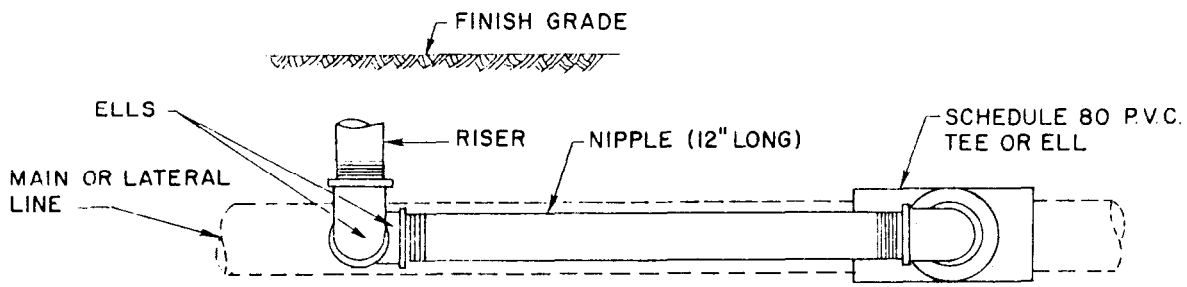
**METHOD A**

**METHOD B**

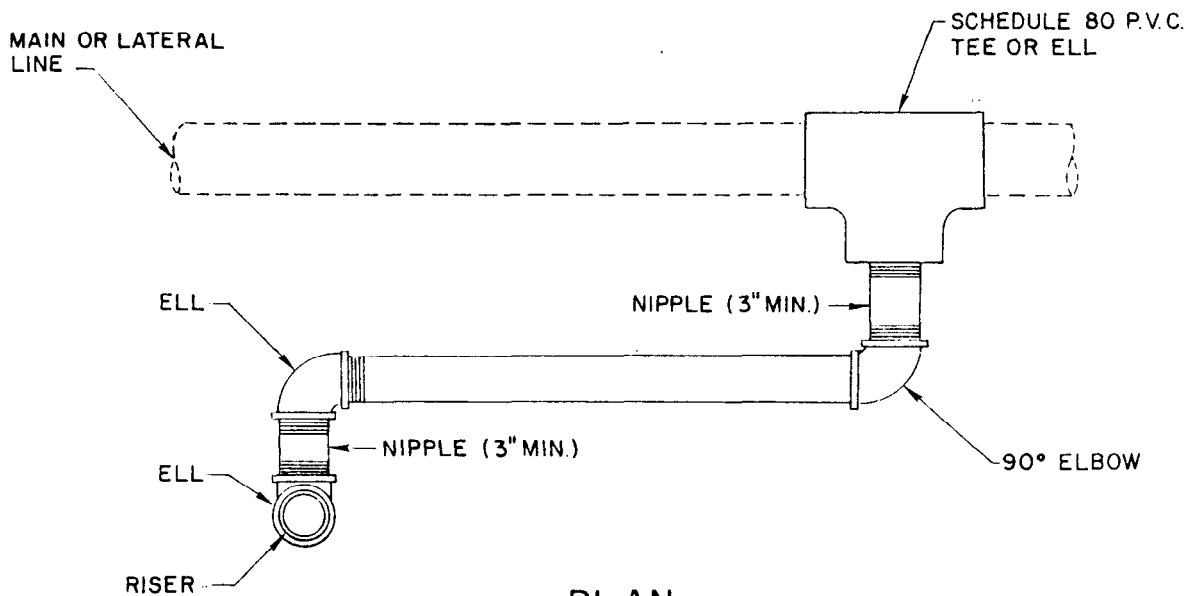
**NOTE:**

EXCEPT AS NOTED, ALL PIPE AND FITTINGS SHALL BE GALVANIZED STEEL PIPE IN ACCORDANCE WITH THE STANDARD SPECIFICATIONS SECTION 308-2.

**OSCILLATING SPRINKLER HEAD**



ELEVATION



PLAN

DETAIL A  
DOUBLE SWING JOINT

NOTE:

PIPE AND FITTINGS SHALL BE EITHER GALVANIZED STEEL PER THE STANDARD SPECIFICATIONS OR SCHEDULE 80 P.V.C.