

ATMOSPHERIC  
VACUUM BREAKER

6" NIPPLE

90° ELBOW

6" ABOVE HIGHEST  
HEAD, OUTLET OR  
FLOOD LINE

FLOW

FINISHED GRADE

UNION WITH BRASS OR  
COPPER SEAT (TYPICAL)

SCHEDULE 80 PVC NIPPLE  
LENGTH AS REQUIRED  
(TYPICAL)

1" (TYPICAL)

6" (TYPICAL)

TOP OF CONCRETE

COUPLING (TYPICAL)

12" WIDE CONCRETE

PLACE AGAINST UNDISTURBED  
OR COMPACTED SOIL

LATERAL LINE (TYPICAL)

90° STREET ELBOW  
(TYPICAL)

**NOTES:**

1. THE VACUUM BREAKER SHALL BE INSTALLED DOWNSTREAM FROM THE CONTROL VALVE.
2. EXCEPT AS NOTED, ALL PIPE AND FITTINGS SHALL BE GALVANIZED STEEL PER THE STANDARD SPECIFICATIONS.
3. CONCRETE SHALL BE 420-C-2000.
4. THE ATMOSPHERIC VACUUM BREAKER CAN BE NO LARGER THAN A 1 1/2" SIZE UNIT.
5. NO VALVE OR SHUT OFF SHALL BE INSTALLED DOWNSTREAM FROM THE ATMOSPHERIC VACUUM BREAKER.
6. THE BACKFLOW PREVENTER TO BE INSTALLED, SHALL BE OF A TYPE AND MANUFACTURE CURRENTLY APPROVED BY THE COUNTY OF LOS ANGELES, DEPARTMENT OF HEALTH SERVICES.

**ATMOSPHERIC VACUUM BREAKER**

NOT TO SCALE

BUREAU OF ENGINEERING

DEPARTMENT OF PUBLIC WORKS

CITY OF LOS ANGELES

**BACKFLOW PREVENTER INSTALLATION**

STANDARD PLAN  
**S-656-0**

SUBM: TED *December 6, 1978*  
*City of Los Angeles*  
LINEER OF DESIGN  
*Edward S. Davis*  
DEPUTY ENGINEER

APPROVED *DEC 15, 1978*  
*Donald C. Williams*  
CITY ENGINEER

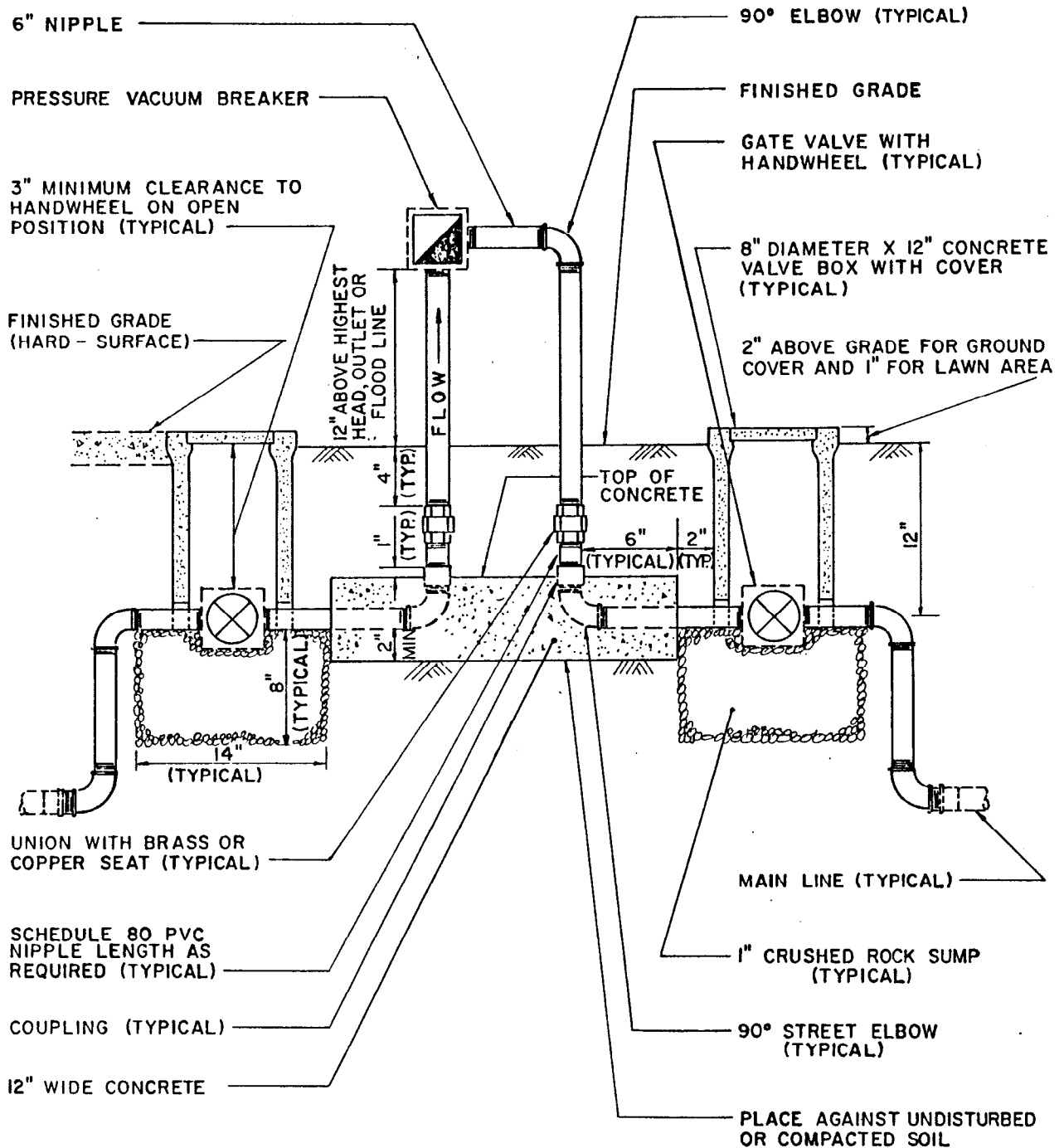
DESIGNED BY  
LANESCAPE  
STANDARD.COM

DRAWN BY  
E. L. CHIN

CHECKED BY

REVISIONS					SUPERSEDES	REFERENCES
NO.	DATE	DESCRIPTION	ENGR. OF DESIGN	CITY ENGR		

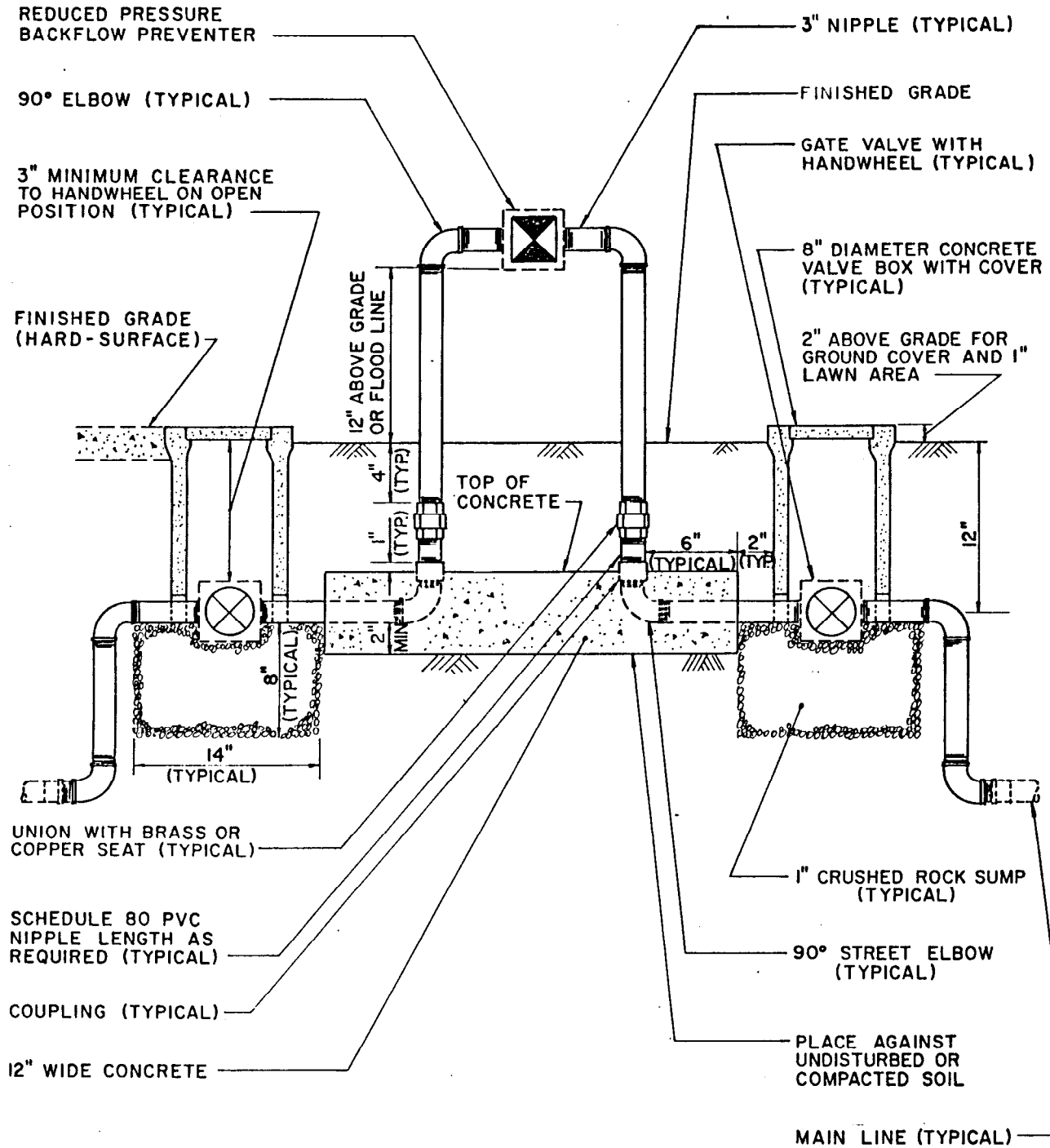
VAULT INDEX NUMBER B-3958  
SHEET 1 OF 4 SHEETS



**NOTES:**

1. EXCEPT AS NOTED, ALL PIPE AND FITTINGS SHALL BE GALVANIZED STEEL PER THE STANDARD SPECIFICATIONS.
2. CONCRETE SHALL BE 420 - C - 2000.
3. THE PRESSURE VACUUM BREAKER SHALL BE TESTED BY A CERTIFIED TESTER AND THE RESULTS SENT TO THE LOS ANGELES COUNTY HEALTH DEPARTMENT ON THE "BACKFLOW PREVENTION DEVICE FIELD TESTING AND MAINTENANCE REPORT" A DUPLICATE COPY OF THE REPORT SHALL BE FURNISHED TO THE ENGINEER.
4. THE BACKFLOW PREVENTER TO BE INSTALLED, SHALL BE OF A TYPE AND MANUFACTURE CURRENTLY APPROVED BY THE COUNTY OF LOS ANGELES, DEPARTMENT OF HEALTH SERVICES.

**PRESSURE VACUUM BREAKER**  
NOT TO SCALE

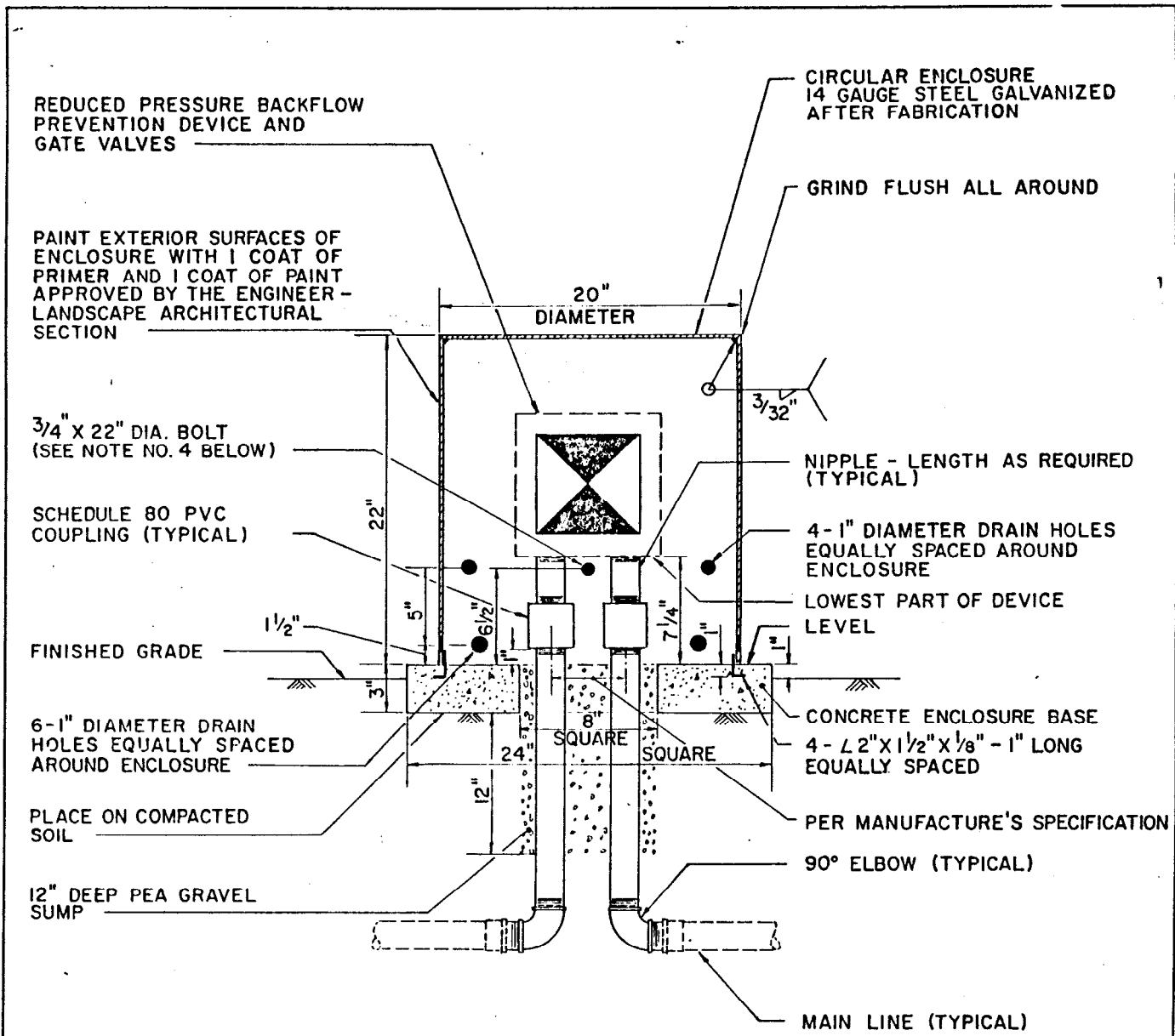


**NOTES:**

1. EXCEPT AS NOTED, ALL PIPE AND FITTINGS SHALL BE GALVANIZED STEEL PER THE STANDARD SPECIFICATIONS.
2. CONCRETE SHALL BE 420-C-2000.
3. THE BACKFLOW PREVENTER SHALL BE TESTED BY A CERTIFIED TESTER AND THE RESULTS SENT TO THE LOS ANGELES COUNTY HEALTH DEPARTMENT ON THE "BACKFLOW PREVENTION DEVICE FIELD TESTING AND MAINTENANCE REPORT." A DUPLICATE COPY OF THE REPORT SHALL BE FURNISHED TO THE ENGINEER.
4. THE BACKFLOW PREVENTER TO BE INSTALLED, SHALL BE OF A TYPE AND MANUFACTURE CURRENTLY APPROVED BY THE COUNTY OF LOS ANGELES, DEPARTMENT OF HEALTH SERVICES.

**REDUCED PRESSURE BACKFLOW PREVENTER-TYPE I**

NOT TO SCALE



**NOTES:**

1. EXCEPT AS NOTED, ALL PIPE AND FITTINGS SHALL BE BRASS PER ASTM DESIGNATION B43.
2. CONCRETE SHALL BE 420-C-2000.
3. THE BACKFLOW PREVENTER SHALL BE TESTED BY A CERTIFIED TESTER AND THE RESULTS SENT TO THE LOS ANGELES COUNTY HEALTH DEPARTMENT ON THE "BACKFLOW PREVENTION DEVICE FIELD TESTING AND MAINTENANCE REPORT". A DUPLICATE COPY OF THE REPORT SHALL BE FURNISHED TO THE ENGINEER.
4. PROVIDE 3/4" DIAMETER BOLT THROUGH ENCLOSURE TO LOCK ENCLOSURE TO BACKFLOW PREVENTER. DRILL BOLT END WITH 3/8" HOLE TO PROVIDE FOR LOCK.
5. BACKFLOW DEVICE SHALL BE INSTALLED AT LOCATION INDICATED ON PLANS. A MINIMUM OF 6" ABOVE FLOOD LINE MUST BE MAINTAINED.
6. THE BACKFLOW PREVENTER TO BE INSTALL, SHALL BE OF A TYPE AND MANUFACTURE CURRENTLY APPROVED BY THE COUNTY OF LOS ANGELES, DEPARTMENT OF HEALTH SERVICES.

**REDUCED PRESSURE BACKFLOW PREVENTER & ENCLOSURE-TYPE 2**  
NOT TO SCALE