

BOARD OF PUBLIC WORKS
MEMBERS

ANDREA A. ALARCÓN
PRESIDENT

JERILYN LÓPEZ MENDOZA
VICE PRESIDENT

JOHN J. CHOI
PRESIDENT PRO TEMPORE

STEVEN T. NUTTER
COMMISSIONER

VALERIE LYNNE SHAW
COMMISSIONER

ARLEEN P. TAYLOR
EXECUTIVE OFFICER

CITY OF LOS ANGELES
CALIFORNIA



ANTONIO R. VILLARAIGOSA
MAYOR

DEPARTMENT OF
PUBLIC WORKS

BUREAU OF
ENGINEERING

GARY LEE MOORE, P.E.
CITY ENGINEER

1149 S. BROADWAY, SUITE 700
LOS ANGELES, CA 90015-2213

<http://eng.lacity.org>

October 25, 2011

**NOTICE OF INTENT TO ADOPT A NEGATIVE DECLARATION FOR THE
NORTH VALLEY FIRE STATION NO. 7 PROJECT (W.O. E170093B)**

Pursuant to the State of California Public Resources Code Article 7 of the California Environmental Quality Act (CEQA), as amended, the City of Los Angeles Bureau of Engineering has prepared an Initial Study for the project described below. Under CEQA, the City identified no significant impacts and proposes to adopt a Negative Declaration.

Project Location: The proposed project is located on several vacant parcels located west of Van Nuys Boulevard at 14630-14666 Plummer Street in the Mission Hills-Panorama City North Hills Community Plan Area.

Project Description: The City of Los Angeles (City) is proposing to construct a replacement fire station at 14630-14666 West Plummer Street in the community of Panorama City. The existing Los Angeles City Fire Station No. 7 located at 14123 Nordhoff Street (approximately one mile away) cannot house the additional resources needed to meet present and future demands for fire protection services. Prior to construction, the City would acquire the property under consideration. The proposed project will use accrued interest and savings from Proposition F, approved by voters on November 7, 2000. The replacement fire station will include an approximate 15,500 square-foot facility and other associated improvements. Disposition of the existing Fire Station No. 7 at 14123 W. Nordhoff Street has not been determined at this time. Until such a determination is made, the Department of General Services would maintain the buildings.

In compliance with the requirements of the California Environmental Quality Act (CEQA), an Initial Study has been prepared to assess the potential environmental impacts of this project. Under CEQA, the City identified no significant impacts. As such, the City proposes to adopt a Negative Declaration.

This notice is intended to give interested parties an opportunity to comment on the proposed project and the Initial Study which is attached or available for review at the following public library: This notice is intended to give interested parties an opportunity to comment on the proposed project. The Initial Study is available for review at Panorama City Branch Library, 14345 Roscoe Blvd., Panorama City, CA 91402 – Tel. (818) 894-4071. A copy of the Initial Study may also be obtained by contacting Catalina Hernandez of the Bureau of Engineering at (213) 485-5756 and can also be accessed online at <http://eng.lacity.org/techdocs/emg/>.

The 20-day public review period starts October 27, 2011 and ends November 16, 2011. **Comments must be received by November 16, 2011 in writing, by email to Catalina.Hernandez@lacity.org, or by mail to:**

City of Los Angeles Department of Public Works
Bureau of Engineering, EMG
Attn: Catalina Hernandez, Environmental Specialist
1149 S. Broadway, Suite 600
Los Angeles, CA 90015-2213

As a covered entity under Title II of the Americans with Disabilities Act, the City of Los Angeles does not discriminate on the basis of disability and, upon request, will provide reasonable accommodation to ensure equal access to its programs, services, and activities.



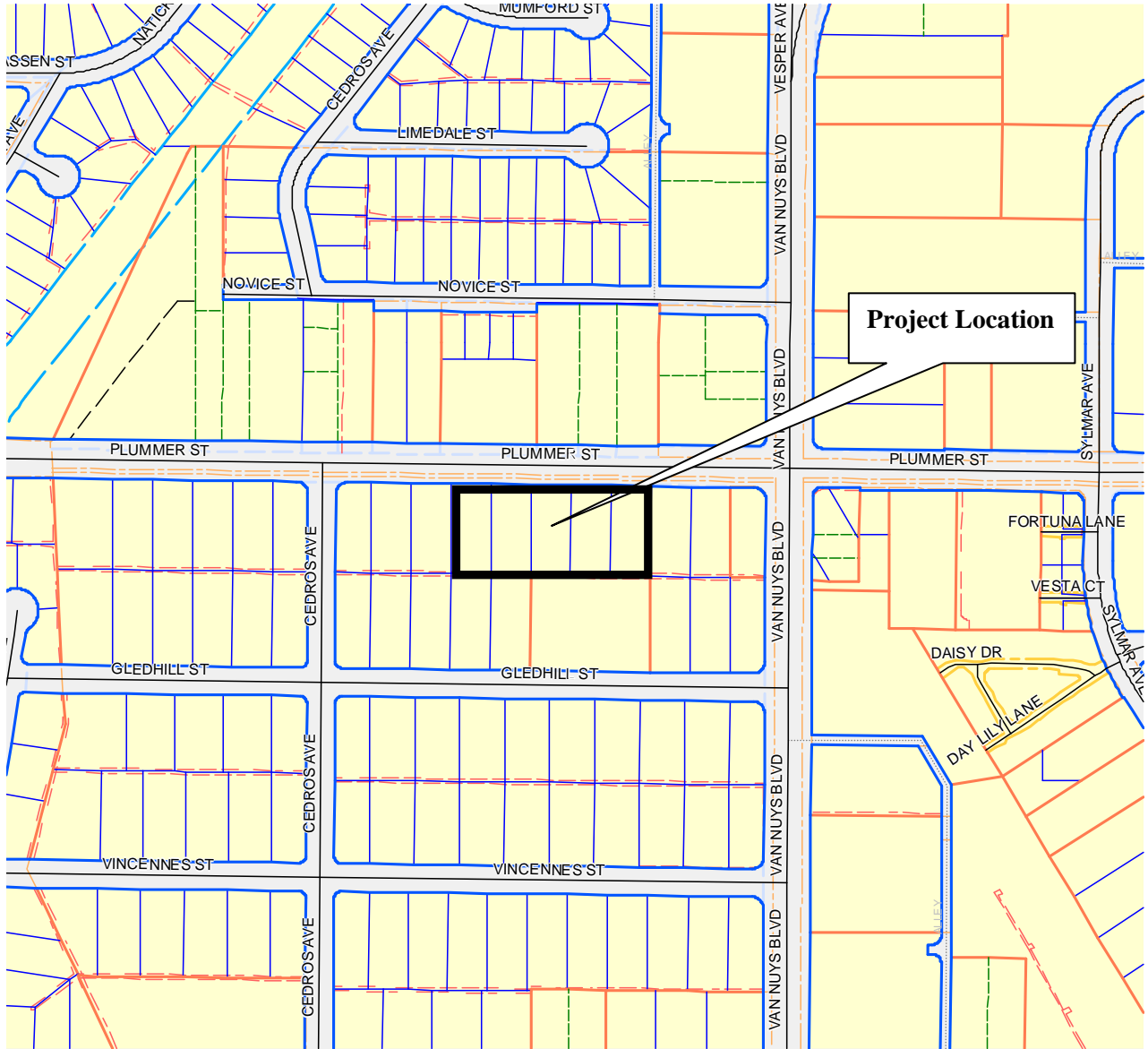


Figure1. Project Location – Vacant parcels located at 14630-14666 West Plummer Street