

# CITY OF LOS ANGELES

CALIFORNIA

DEPARTMENT OF  
PUBLIC WORKS  
BUREAU OF  
ENGINEERING

BOARD OF PUBLIC WORKS  
MEMBERS

ANDREA A. ALARCÓN  
PRESIDENT

JERILYN LÓPEZ MENDOZA  
VICE PRESIDENT

STEVEN T. NUTTER  
COMMISSIONER

VALERIE LYNNE SHAW  
COMMISSIONER

ARLEEN P. TAYLOR  
EXECUTIVE OFFICER



ANTONIO R. VILLARAIGOSA  
MAYOR

GARY LEE MOORE, P.E.  
CITY ENGINEER  
1149 S. BROADWAY, SUITE 700  
LOS ANGELES, CA 90015-2213

<http://eng.lacity.org>

August 3, 2012

## NOTICE OF INTENT TO ADOPT A MITIGATED NEGATIVE DECLARATION FOR THE POLICE ACADEMY REPLACEMENT TRAINING FACILITY (W.O. E170828F)

*Pursuant to the State of California Public Resources Code Article 7 of the California Environmental Quality Act (CEQA), as amended, the City of Los Angeles Bureau of Engineering has prepared an Initial Study for the project described below. Under CEQA, the City identified no significant impacts and proposes to adopt a Mitigated Negative Declaration.*

**Project Location:** The proposed project would be located in the City of Los Angeles at the existing Los Angeles Police Academy (the "Academy") at 1891 North Academy Drive in the Elysian Park area, approximately 1.7 miles north of downtown Los Angeles, adjacent to the Dodger Stadium parking lot in the Silver Lake-Echo Park-Elysian Valley Community Plan Area.

**Project Description:** The City of Los Angeles (City) is proposing to construct a multi-level, 24,000-square-foot training facility on a sloped site adjacent to the private portion of Academy Drive and west of the existing Academy buildings. There are currently trailers and a tennis court at this location. The facility would provide flexible classroom space, office space, a conference room, and a break room, and would serve as a permanent training facility for officers and recruits. Training currently occurs in various trailer buildings on the Academy campus; the proposed project would replace these trailers. In addition, the project would provide three disabled parking spaces adjacent to the facility and 46 surface parking spaces on the southeastern portion of the campus. The facility would house the same complement of staff as present conditions. The proposed project would be funded with revenue from Proposition Q – the Citywide Public Safety Bond Measure approved by voters in 2002.

In compliance with the requirements of the California Environmental Quality Act (CEQA), an Initial Study has been prepared to assess the potential environmental impacts of this project. Mitigation measures have been incorporated into the project to ensure that any impacts are reduced to a less than significant level. As such, the City proposes to adopt a Mitigated Negative Declaration.

This notice is intended to give interested parties an opportunity to comment on the proposed project. The Initial Study is available for review at the Edendale Branch Library, 2011 W Sunset Boulevard, Los Angeles, CA 90026 – Tel. (213) 207-3000 and at the Echo Park Branch Library, 1410 W Temple Street, Los Angeles, CA 90026 – Tel. (213) 250-7808. A copy of the Initial Study may also be obtained by contacting Norman Mundy of the Bureau of Engineering at (213) 485-5737 and can also be accessed online at <http://eng.lacity.org/techdocs/emg/>.

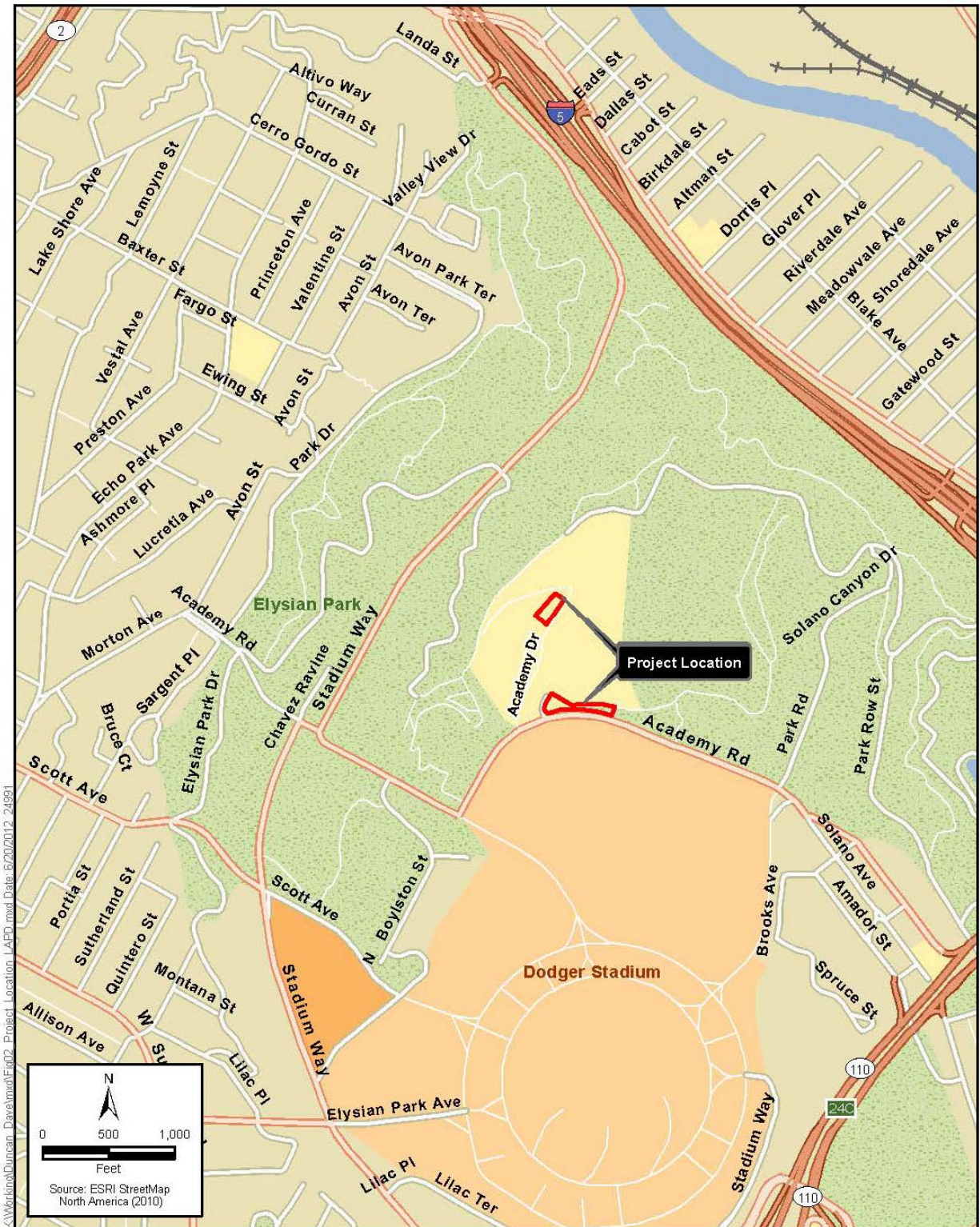
The 20-day public review period starts August 9, 2012, and ends August 28, 2012. **Comments must be received by August 28, 2012, in writing, by email to [Norman.Mundy@lacity.org](mailto:Norman.Mundy@lacity.org), or by mail to:**

City of Los Angeles Department of Public Works  
Bureau of Engineering, EMG  
Attn: Norman Mundy, Environmental Specialist  
1149 S. Broadway, Suite 600  
Los Angeles, CA 90015-2213

*As a covered entity under Title II of the Americans with Disabilities Act, the City of Los Angeles does not discriminate on the basis of disability and, upon request, will provide reasonable accommodation to ensure equal access to its programs, services, and activities.*



NOTICE OF INTENT TO ADOPT A MITIGATED NEGATIVE DECLARATION FOR THE POLICE ACADEMY REPLACEMENT TRAINING FACILITY (WO# E170828F)



The proposed project would be located at the site of the existing Los Angeles Police Academy, 1891 North Academy Drive in the Los Angeles community of Elysian Park.