

**APPENDIX B**

**TEST PITS**

**APPENDIX B**

**TEST PITS**

**TABLE OF CONTENTS**

	<b>Page</b>
B.1 TEST PIT FIELDWORK .....	B-1

**FIGURES**

- B-1 Log of TP-1
- B-2 Log of TP-2

## APPENDIX B

### TEST PITS

#### B.1 TEST PIT FIELDWORK

Shannon & Wilson observed two test pits, designated SW-TP-1 through SW-TP-8, on November 5 and 6, 2013. The test pits were excavated to observe the ground crack and rock below ground surface and the stability in this area. The approximate locations are shown in Figure 3). The excavation and backfilling were completed by John S. Meek Construction, under subcontract to Hayward Baker, Inc (HBI).

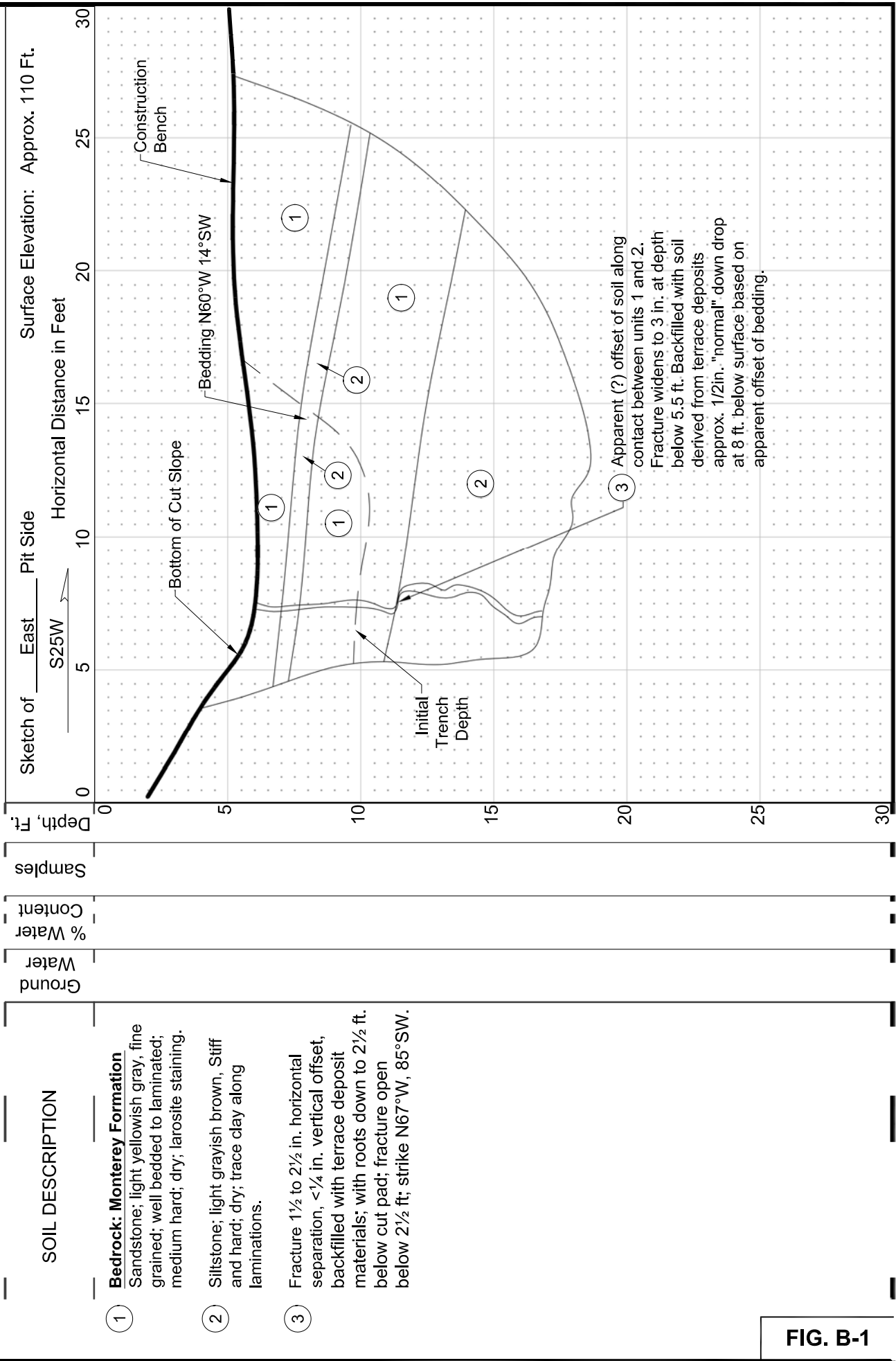
The test pits were excavated to depths between 10 and 12 feet below the existing grade by using a long-reach backhoe. The pits were backfilled with flowable cement/concrete.

The rock and geologic features encountered were logged by our field representative. The logs of the pits are presented in Figures B-1 and B-2.

**SHANNON & WILSON, INC.**  
Geotechnical and Environmental Consultants

JOB NO: 51-1-10079-033 DATE: 11/6/2013 LOCATION: Paseo Del Mar  
PROJECT: White Point Landslide - Construction Cut Pad

**LOG OF TEST PIT TP-1**

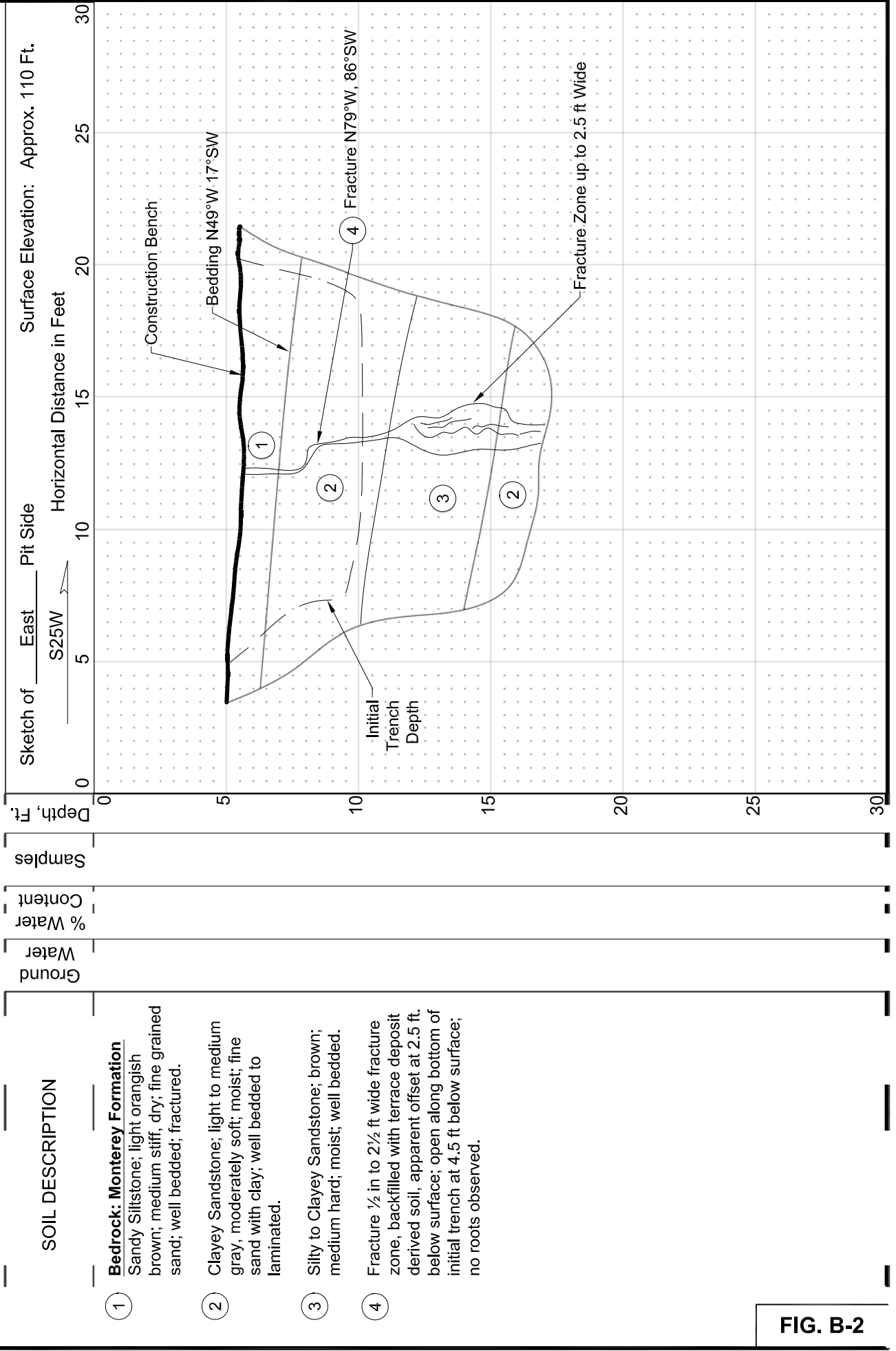


**FIG. B-1**

**SHANNON & WILSON, INC.**  
Geotechnical and Environmental Consultants

JOB NO: 51-1-10079-033 DATE: 11/6/2013 LOCATION: Paseo Del Mar  
PROJECT: White Point Landslide - Construction Cut Pad

**LOG OF TEST PIT TP-2**



**FIG. B-2**